

**PROPRIETARY ITEM: FYREHALT - EVOLUTION**  
**AUTOMATIC OVERHEAD PERIMETER TYPE FABRIC FIRE CURTAIN**

**PART 1 - GENERAL**

**1.01 SUMMARY**

- A. Section Includes:
  - 1. Fire alarm or smoke detector-activated, overhead coiling fabric fire curtain.
  - 2. Self-closing without auxiliary power.
  - 3. For small and medium protected openings.
- B. Related Requirements:
  - 1. Access Panels.
  - 2. Load Bearing Header Framing
  - 3. Finish: Powder coating of specified components.
  - 4. Detection and Alarm: Provision of fire alarm.
  - 5. Site Electrical: Provision of 240VAC, 10Amp General purpose outlets (GPO's)
  - 6. Product Electrical: System connection including cable glands, junction boxes, conductors, wiring devices, and backup power.

**1.02 REFERENCES**

- A. National Construction Code and Fire Engineers Report:
  - 1. Schedule 1 - NZ Building Regulations 1992
  - 2. FE Report Y; Version XX, Dated;
- B. Standards:
  - 1. NZS 4512:2010 – Fire Detection and Alarm Systems in Buildings AS1530.4 – Methods for fire tests on building materials, components and structures, Part 4 Fire-resistance test of elements of construction.
  - 2. AS1905.2 – Fire Shutters.
  - 3. AS/NZS3837– Method of test for heat and smoke release rates for materials and products using an oxygen consumption calorimeter
  - 4. AS6905.1 – Smoke Doors
  - 5. AS1530.7 – Methods for fire tests on building materials, components and structures. Part 7 – Smoke control assemblies – ambient and medium temperature leakage test procedure.
  - 6. UL864 – Control Units for Fire Protective Signaling Systems

**1.03 SUSTAINABLE DESIGN REQUIREMENTS**

- A. ESD: Comply with sustainable design requirements including, without limitation, submittal and documentation requirements.
- B. Credit/Point Goals Applicable To This Section: In addition to global project credit/point goals:
  - 1. Materials & Resources - construction waste management
  - 2. Materials & Resources - recycled content
  - 3. Materials & Resources - regional materials
  - 4. Indoor Environmental Quality - construction IAQ management plan

#### 1.04 SUBMITTALS

- A. Comply with Submittal Procedures:
  - 1. NCC Clause A2.4 Evidence of Suitability – submit full scale fire test report and Formal Opinion from a Registered Testing Authority clearly identifying maximum Fire Resistance Level and maximum allowable sizes.
  - 2. Manufacturers Product data
  - 3. Shop drawings:
    - a. Curtain location and unique identification number
    - b. Include opening dimensions
    - c. Show and identify related work performed under other sections of the specifications including access and electrical requirements
  - 4. Quality Assurance/Control Submittals:
    - a. Site Inspection and Test Plan.
    - b. Manufacturers ISO 9001 Certificate of Accreditation

#### 1.05 CLOSEOUT SUBMITTALS

- A. Comply with Project Closeout:
  - 1. Certificate of Compliance with reference to Fire Engineers Report and Evidence of Suitability.
  - 2. Operation and maintenance manual.
  - 3. Manufacturer's warranty.

#### 1.06 QUALITY ASSURANCE

- A. Certifications:
  - 1. AS1530.4 full scale fire test on a complete assembly in a fire rated plasterboard bulkhead
  - 2. National Construction Code Clause C1.10 when tested to AS3837
  - 3. AS1530.7 full scale air (smoke) leakage test on a complete assembly
  - 4. Laboratory cycle tested on a 10m x 3m complete assembly
- B. Pre-Installation Meeting:
  - 1. Schedule and convene a pre-installation meeting prior to commencement of field operations with representatives of the following in attendance: Owner, Architect, General Contractor, fire curtain sub-contractor, mechanical sub-contractor, electrical sub-contractor, and ceiling/fitout sub-contractor
  - 2. Review substrate conditions, requirements of related work, installation instructions, storage and handling procedures, and protection measures.
  - 3. Document the responsibilities of various parties and deviations from specifications and installation instructions.

#### 1.07 DELIVERY, STORAGE, AND HANDLING

- A. Comply with project delivery, storage, and handling requirements.
- B. Comply with manufacturer's instructions.

## 1.08 WARRANTY

- A. Provide manufacturer's standard one year warranty for Defect Liability Period.
- B. Provide manufacturer's standard 5 year product and installation warranty in conjunction with a Smoke Control's standard 5 + 5 year maintenance contract
- C. Maintenance and Testing:
  - 1. Perform minimum quarterly maintenance and testing on each fire curtain as required by the manufacturer's warranty, AS1851 - Maintenance, and as required by the Fire Engineers Report.
  - 2. Provide Commissioning documentation including Project name, project address, location and curtain number, number of cycles tested, observations, comments (eg: curtain out of alignment), notes (eg: curtain alignment repaired), Pass/fail.
  - 3. Re-certification after the defect liability period

## PART 2 - PRODUCTS

### 2.01 MANUFACTURED UNITS

- A. Proprietary item; Model Fyrehalt - EVOLUTION automatic fire curtain.
- B. Manufacturer:
  - 1. Smoke Control Systems Pty Ltd
  - 2. Distributed by Smoke Control NZ Ltd, 369 Queen Street, Auckland, 1010, New Zealand  
[www.smokecontrol.co.nz](http://www.smokecontrol.co.nz)
- C. Label each fire curtain with following information:
  - 1. Manufacturer's name and contact details.
  - 2. Curtain location and unique identification number
  - 3. Fire Resistance Level
  - 4. Date of installation

### 2.02 DESIGN CRITERIA

- A. Country of Manufacture: Australia
- B. Head box; 150 H x 490 W mm
- C. Side guide; 100 mm x 50mm (nominal, refer manufacturer's drawings).

See manufacturer's literature for head box and side guide mounting options.
---

- D. Fabric type; 660g/m<sup>2</sup> stainless steel woven fabric, incorporating a coated glassfibre material to reduce radiant heat transmission.
- E. Motor type; Proprietary Smoke Control 24V tubular motor with torque selection based on curtain size with upper and lower limit settings.
- F. Bottom bar; 300 mm wide (at the base) sheet metal pan type section, requiring a 310mm min. slot in the ceiling lining.

- G. Accessories;
  - a. Curtain mounted re-wind switch
  - b. Flush ceiling mounted radial obstruction sensors spaced as required
  - c. Strobes and sounders
- H. Finishes; Dulux Duralloy colour range (Standard)
- I. Load requirements at head = 25kg/m of width
- J. Load requirements at sides (only if side guide required) = 20kg/m of height
- K. Mounting orientation
  - 1. Installation Configuration: Housing attached directly to substrate above opening
  - 2. -/120/120 fire rated bulkhead to be constructed by others in accordance with Smoke Control drawing number **SCS-FHE-0001**
  - 2. Fabricate and install mounting brackets, hardware, and fasteners needed to attach fire curtain assembly to building structure.
- L. Signage on curtain (standard stencils)
  - 1. Green running man (350 x 350mm)
  - 2. Arrows (350 x 190mm high)
  - 3. Fire Safety Curtain (150mm high x 1500mm long)
  - 4. Push Button (100mm high)

## 2.03 PERFORMANCE CRITERIA

- 1. Fire Resistance Level (FRL): -/120/-
- 2. Smoke leakage:  $\leq 75\text{m}^3/\text{hour}$  through the fabric when tested in accordance with a permeability test
- 3. Group Number for fabric: 1 when tested in accordance with AS3837
- 4. Durability; medium duty – tested to 500 maintenance free cycles
- 5. Maximum pressure;  $\Delta 40\text{Pa}$
- 6. Maximum allowable gap to non-combustible sill 25mm
- 7. Combustible floor coverings permitted at threshold (conditions apply)
- 8. Closing time of 100 - 200mm/sec
- 9. Time delay to required (exhaust/pressurization) fan speed = 60 seconds (min) – 90 seconds (max). Time is dependent on drop height of curtain.
- 10. Time delay for rewind; ensure fan speed is zero + 20 seconds prior to reset of alarm signal from FIP enabling curtain rewind.
- 11. Fail safe close on loss of power and/or signal trip using battery backup.
- 12. Motor rewind automatically on re-set of power and alarm signal, no service call needed.
- 13. Battery backup to reduce nuisance deploys required.
- 14. Commissioning shall be conducted in conjunction with Mechanical services and detection/alarm system. Systems shall be balanced to work together without over pressurizing the fire curtain.
- 15. Maintenance shall be conducted quarterly by the Manufacturer and/or their nominated representative to the Manufacturers recommendations.

## 2.04 COMPONENTS

- A. Curtain Fabric: Fyrehalt fabric glass 2002 - Glass fibre material with stainless steel wire reinforcement, coated on a single side with polyurethane and incorporating a RED cotton strip for identification purposes.

- B. Side Guide Assembly: 1.6mm thick Zincalume mild steel incorporating no moving parts.
- C. Housing Type: 2.0mm thick galvanized mild steel head box incorporating motor brackets, and drive system
- D. Drive system: Drive shaft system forming a single continuous drive unit once installed. Powered by 24V motors and 240V motor controllers. All concealed within the head box structure.
- E. Bottom Bar: 1.6mm thick galvanized mild steel pan section
- F. SCS1500 Series Rewind Motor
  - 1. Tubular motor with fail safe gravity deploy operation
  - 2. Upper and lower limit settings
  - 3. 24 VDC.
- G. SCS1500 Series Master and slave control set
  - 1. Battery backup
  - 2. 240 VAC power
  - 3. Normally open 0 Volt alarm signal

### **PART 3 - EXECUTION**

#### **3.01 EXAMINATION**

- A. Examine substrates upon which work will be installed.
  - 1. Verify related work performed under other sections is complete and in accordance with shop drawings.
  - 2. Verify wall surfaces are acceptable for installation of fire curtain system components
  - 3. Verify setout point locations.
- B. Coordinate with responsible entity to perform corrective work on unsatisfactory substrates.
- C. Coordinate electrical interface and connection with Electrical sub-contractor.
- D. Coordinate fire and alarm interface with fire sub-contractor.
- E. Commencement of work by installer is acceptance of substrate.

#### **3.02 INSTALLATION**

- A. Install fire curtain system components in accordance with fire test approvals and manufacturer's installation instructions.
- B. For reliability, corners are to be folded to continue the concertina action of the system. Flat fabric that bunches on rewind will ultimately cause operational issues and affect overall reliability of the system. Products not incorporating folded corners are not to be used on this project.
- C. While some Registered Testing Authorities provide Formal Opinions in regards to the expected fire resistance level of fire curtains, they do not discuss nor provide a warranty in regards to their reliability. Experience shows that some manufacturer designs of fire curtains do not operate reliably once installed and attract extraordinarily high maintenance costs. For this reason multiple barrel, overlapped fire curtains are deemed not equivalent to this specification on this project and shall not be substituted for a single barrel continuous span system.
- D. Once installed it shall be demonstrated that the system shall gravity fail safe close on the receipt of an alarm signal or loss of power without the need of battery backup. On reset of power and the alarm signal the system shall automatically rewind to its standby position.

### 3.03 FIELD QUALITY CONTROL

#### A. Field Test 1: Calibration

Follow manufacturer's cycle test procedures prior to application of mechanical services.

1. Conduct a minimum of 10 consecutive, error free cycle tests
2. Complete Inspection and Test Plan

#### B. Field Test 2: Balancing test

Test operation on general alarm in conjunction with mechanical services

1. Adjust fan speed and activation timing to ensure pressure does not exceed  $\Delta 25\text{Pa}$  across fire curtain and to minimize gaps at the sill.

#### C. Field Test 3: Commissioning

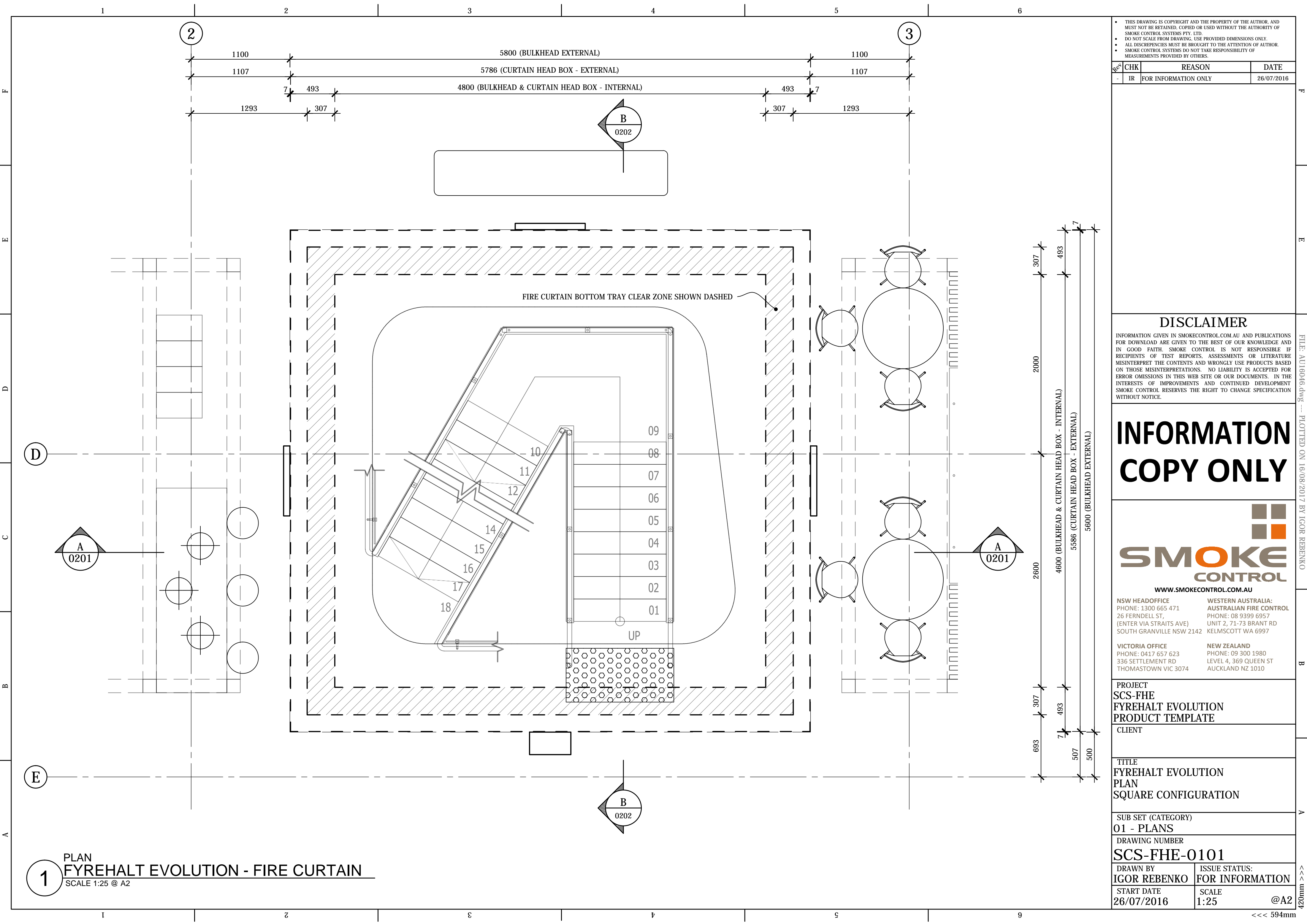
Test operation on general alarm (or zone alarm as required by Fire Engineers Report) by activating an adjacent smoke detector

1. Notify Owner's Representative, local Fire Services and alarm sub-contractor minimum one week in advance of scheduled testing.
2. Complete Commissioning submittals.

END OF SECTION



F	E	D	C	B	A	I	2	3	4	5	6	7	8	9	10	11	12	13	14	15	16	17	18	19	20	21	22	23	24	25	26	27	28	29	30	31	32	33	34	35	36	37	38	39	40	41	42	43	44	45	46	47	48	49	50	51	52	53	54	55	56	57	58	59	60	61	62	63	64	65	66	67	68	69	70	71	72	73	74	75	76	77	78	79	80	81	82	83	84	85	86	87	88	89	90	91	92	93	94	95	96	97	98	99	100	101	102	103	104	105	106	107	108	109	110	111	112	113	114	115	116	117	118	119	120	121	122	123	124	125	126	127	128	129	130	131	132	133	134	135	136	137	138	139	140	141	142	143	144	145	146	147	148	149	150	151	152	153	154	155	156	157	158	159	160	161	162	163	164	165	166	167	168	169	170	171	172	173	174	175	176	177	178	179	180	181	182	183	184	185	186	187	188	189	190	191	192	193	194	195	196	197	198	199	200	201	202	203	204	205	206	207	208	209	210	211	212	213	214	215	216	217	218	219	220	221	222	223	224	225	226	227	228	229	230	231	232	233	234	235	236	237	238	239	240	241	242	243	244	245	246	247	248	249	250	251	252	253	254	255	256	257	258	259	260	261	262	263	264	265	266	267	268	269	270	271	272	273	274	275	276	277	278	279	280	281	282	283	284	285	286	287	288	289	290	291	292	293	294	295	296	297	298	299	300	301	302	303	304	305	306	307	308	309	310	311	312	313	314	315	316	317	318	319	320	321	322	323	324	325	326	327	328	329	330	331	332	333	334	335	336	337	338	339	340	341	342	343	344	345	346	347	348	349	350	351	352	353	354	355	356	357	358	359	360	361	362	363	364	365	366	367	368	369	370	371	372	373	374	375	376	377	378	379	380	381	382	383	384	385	386	387	388	389	390	391	392	393	394	395	396	397	398	399	400	401	402	403	404	405	406	407	408	409	410	411	412	413	414	415	416	417	418	419	420	421	422	423	424	425	426	427	428	429	430	431	432	433	434	435	436	437	438	439	440	441	442	443	444	445	446	447	448	449	450	451	452	453	454	455	456	457	458	459	460	461	462	463	464	465	466	467	468	469	470	471	472	473	474	475	476	477	478	479	480	481	482	483	484	485	486	487	488	489	490	491	492	493	494	495	496	497	498	499	500	501	502	503	504	505	506	507	508	509	510	511	512	513	514	515	516	517	518	519	520	521	522	523	524	525	526	527	528	529	530	531	532	533	534	535	536	537	538	539	540	541	542	543	544	545	546	547	548	549	550	551	552	553	554	555	556	557	558	559	560	561	562	563	564	565	566	567	568	569	570	571	572	573	574	575	576	577	578	579	580	581	582	583	584	585	586	587	588	589	590	591	592	593	594	595	596	597	598	599	600	601	602	603	604	605	606	607	608	609	610	611	612	613	614	615	616	617	618	619	620	621	622	623	624	625	626	627	628	629	630	631	632	633	634	635	636	637	638	639	640	641	642	643	644	645	646	647	648	649	650	651	652	653	654	655	656	657	658	659	660	661	662	663	664	665	666	667	668	669	670	671	672	673	674	675	676	677	678	679	680	681	682	683	684	685	686	687	688	689	690	691	692	693	694	695	696	697	698	699	700	701	702	703	704	705	706	707	708	709	710	711	712	713	714	715	716	717	718	719	720	721	722	723	724	725	726	727	728	729	730	731	732	733	734	735	736	737	738	739	740	741	742	743	744	745	746	747	748	749	750	751	752	753	754	755	756	757	758	759	760	761	762	763	764	765	766	767	768	769	770	771	772	773	774	775
---	---	---	---	---	---	---	---	---	---	---	---	---	---	---	----	----	----	----	----	----	----	----	----	----	----	----	----	----	----	----	----	----	----	----	----	----	----	----	----	----	----	----	----	----	----	----	----	----	----	----	----	----	----	----	----	----	----	----	----	----	----	----	----	----	----	----	----	----	----	----	----	----	----	----	----	----	----	----	----	----	----	----	----	----	----	----	----	----	----	----	----	----	----	----	----	----	----	----	----	----	----	----	----	----	-----	-----	-----	-----	-----	-----	-----	-----	-----	-----	-----	-----	-----	-----	-----	-----	-----	-----	-----	-----	-----	-----	-----	-----	-----	-----	-----	-----	-----	-----	-----	-----	-----	-----	-----	-----	-----	-----	-----	-----	-----	-----	-----	-----	-----	-----	-----	-----	-----	-----	-----	-----	-----	-----	-----	-----	-----	-----	-----	-----	-----	-----	-----	-----	-----	-----	-----	-----	-----	-----	-----	-----	-----	-----	-----	-----	-----	-----	-----	-----	-----	-----	-----	-----	-----	-----	-----	-----	-----	-----	-----	-----	-----	-----	-----	-----	-----	-----	-----	-----	-----	-----	-----	-----	-----	-----	-----	-----	-----	-----	-----	-----	-----	-----	-----	-----	-----	-----	-----	-----	-----	-----	-----	-----	-----	-----	-----	-----	-----	-----	-----	-----	-----	-----	-----	-----	-----	-----	-----	-----	-----	-----	-----	-----	-----	-----	-----	-----	-----	-----	-----	-----	-----	-----	-----	-----	-----	-----	-----	-----	-----	-----	-----	-----	-----	-----	-----	-----	-----	-----	-----	-----	-----	-----	-----	-----	-----	-----	-----	-----	-----	-----	-----	-----	-----	-----	-----	-----	-----	-----	-----	-----	-----	-----	-----	-----	-----	-----	-----	-----	-----	-----	-----	-----	-----	-----	-----	-----	-----	-----	-----	-----	-----	-----	-----	-----	-----	-----	-----	-----	-----	-----	-----	-----	-----	-----	-----	-----	-----	-----	-----	-----	-----	-----	-----	-----	-----	-----	-----	-----	-----	-----	-----	-----	-----	-----	-----	-----	-----	-----	-----	-----	-----	-----	-----	-----	-----	-----	-----	-----	-----	-----	-----	-----	-----	-----	-----	-----	-----	-----	-----	-----	-----	-----	-----	-----	-----	-----	-----	-----	-----	-----	-----	-----	-----	-----	-----	-----	-----	-----	-----	-----	-----	-----	-----	-----	-----	-----	-----	-----	-----	-----	-----	-----	-----	-----	-----	-----	-----	-----	-----	-----	-----	-----	-----	-----	-----	-----	-----	-----	-----	-----	-----	-----	-----	-----	-----	-----	-----	-----	-----	-----	-----	-----	-----	-----	-----	-----	-----	-----	-----	-----	-----	-----	-----	-----	-----	-----	-----	-----	-----	-----	-----	-----	-----	-----	-----	-----	-----	-----	-----	-----	-----	-----	-----	-----	-----	-----	-----	-----	-----	-----	-----	-----	-----	-----	-----	-----	-----	-----	-----	-----	-----	-----	-----	-----	-----	-----	-----	-----	-----	-----	-----	-----	-----	-----	-----	-----	-----	-----	-----	-----	-----	-----	-----	-----	-----	-----	-----	-----	-----	-----	-----	-----	-----	-----	-----	-----	-----	-----	-----	-----	-----	-----	-----	-----	-----	-----	-----	-----	-----	-----	-----	-----	-----	-----	-----	-----	-----	-----	-----	-----	-----	-----	-----	-----	-----	-----	-----	-----	-----	-----	-----	-----	-----	-----	-----	-----	-----	-----	-----	-----	-----	-----	-----	-----	-----	-----	-----	-----	-----	-----	-----	-----	-----	-----	-----	-----	-----	-----	-----	-----	-----	-----	-----	-----	-----	-----	-----	-----	-----	-----	-----	-----	-----	-----	-----	-----	-----	-----	-----	-----	-----	-----	-----	-----	-----	-----	-----	-----	-----	-----	-----	-----	-----	-----	-----	-----	-----	-----	-----	-----	-----	-----	-----	-----	-----	-----	-----	-----	-----	-----	-----	-----	-----	-----	-----	-----	-----	-----	-----	-----	-----	-----	-----	-----	-----	-----	-----	-----	-----	-----	-----	-----	-----	-----	-----	-----	-----	-----	-----	-----	-----	-----	-----	-----	-----	-----	-----	-----	-----	-----	-----	-----	-----	-----	-----	-----	-----	-----	-----	-----	-----	-----	-----	-----	-----	-----	-----	-----	-----	-----	-----	-----	-----	-----	-----	-----	-----	-----	-----	-----	-----	-----	-----	-----	-----	-----	-----	-----	-----	-----	-----	-----	-----	-----	-----	-----	-----	-----	-----	-----	-----	-----	-----	-----	-----	-----	-----	-----	-----	-----	-----	-----	-----	-----	-----	-----	-----	-----	-----	-----	-----	-----	-----	-----	-----	-----	-----	-----	-----	-----	-----	-----	-----	-----	-----	-----	-----	-----	-----	-----	-----	-----	-----	-----	-----	-----	-----	-----	-----	-----	-----	-----	-----	-----



- THIS DRAWING IS COPYRIGHT AND THE PROPERTY OF THE AUTHOR, AND MUST NOT BE RETAINED, COPIED OR USED WITHOUT THE AUTHORITY OF SMOKE CONTROL SYSTEMS PTY. LTD.
- DO NOT SCALE FROM DRAWING. USE PROVIDED DIMENSIONS ONLY.
- ALL DISCREPENCIES MUST BE BROUGHT TO THE ATTENTION OF AUTHOR.
- SMOKE CONTROL SYSTEMS DO NOT TAKE RESPONSIBILITY OF MEASUREMENTS PROVIDED BY OTHERS.

Rev	CHK	REASON	DATE
-	IR	FOR INFORMATION ONLY	26/07/2016

### DISCLAIMER

INFORMATION GIVEN IN SMOKECONTROL.COM.AU AND PUBLICATIONS FOR DOWNLOAD ARE GIVEN TO THE BEST OF OUR KNOWLEDGE AND IN GOOD FAITH. SMOKE CONTROL IS NOT RESPONSIBLE IF RECIPIENTS OF TEST REPORTS, ASSESSMENTS OR LITERATURE MISINTERPRET THE CONTENTS AND WRONGLY USE PRODUCTS BASED ON THOSE MISINTERPRETATIONS. NO LIABILITY IS ACCEPTED FOR ERROR OMISSIONS IN THIS WEB SITE OR OUR DOCUMENTS. IN THE INTERESTS OF IMPROVEMENTS AND CONTINUED DEVELOPMENT SMOKE CONTROL RESERVES THE RIGHT TO CHANGE SPECIFICATION WITHOUT NOTICE.

## INFORMATION COPY ONLY



WWW.SMOKECONTROL.COM.AU

NSW HEADOFFICE  
PHONE: 1300 665 471  
26 FERNDILL ST,  
(ENTER VIA STRAITS AVE)  
SOUTH GRANVILLE NSW 2142

WESTERN AUSTRALIA:  
AUSTRALIAN FIRE CONTROL  
PHONE: 08 9399 6957  
UNIT 2, 71-73 BRANT RD  
KELMSCOTT WA 6997

VICTORIA OFFICE  
PHONE: 0417 657 623  
336 SETTLEMENT RD  
THOMASTOWN VIC 3074

NEW ZEALAND  
PHONE: 09 300 1980  
LEVEL 4, 369 QUEEN ST  
AUCKLAND NZ 1010

PROJECT  
SCS-FHE  
FYREHALT EVOLUTION  
PRODUCT TEMPLATE  
CLIENT

TITLE  
FYREHALT EVOLUTION  
PLAN  
SQUARE CONFIGURATION

SUB SET (CATEGORY)  
01 - PLANS

DRAWING NUMBER  
SCS-FHE-0101

DRAWN BY  
IGOR REBENKO

ISSUE STATUS:  
FOR INFORMATION

START DATE  
26/07/2016

SCALE  
1:25 @A2

FILE: AU16046.dwg --- PLOTTED ON 16/08/2017 BY IGOR REBENKO

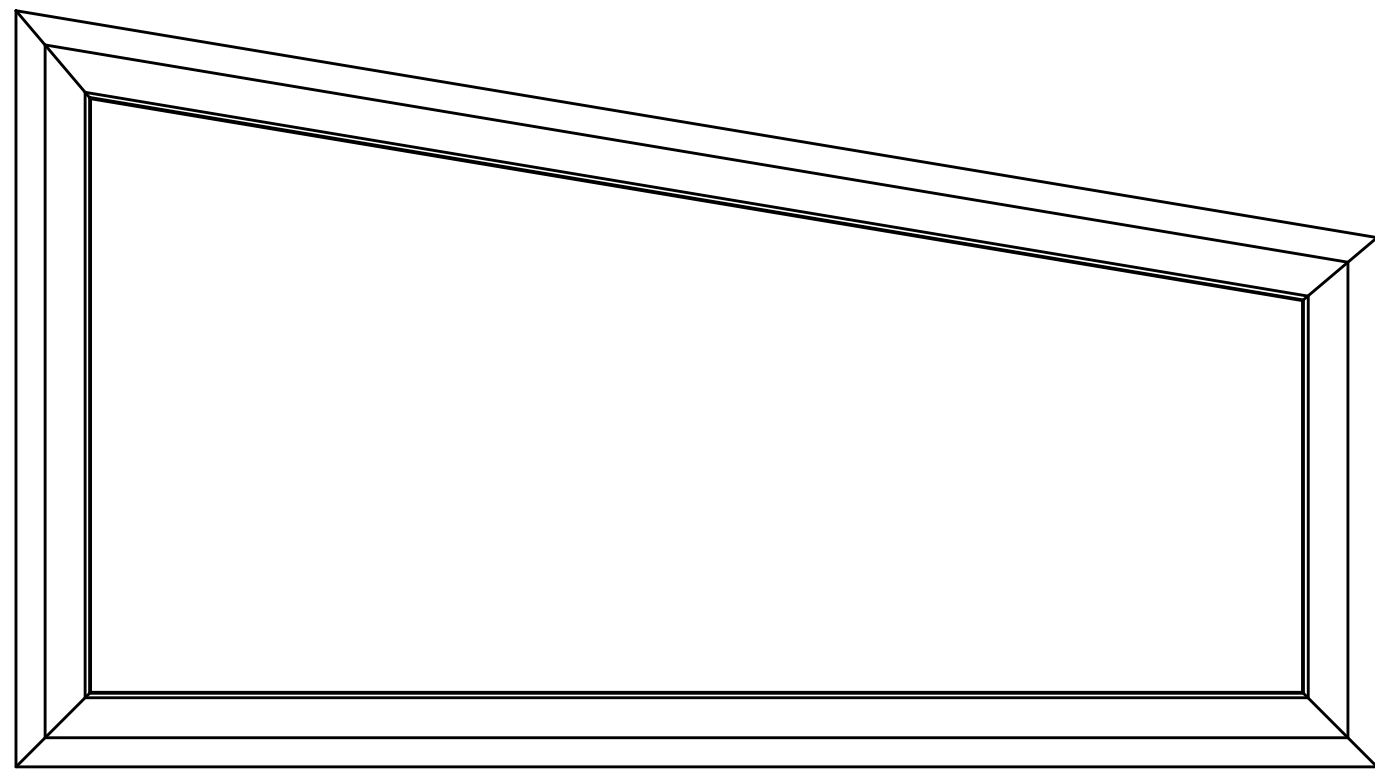
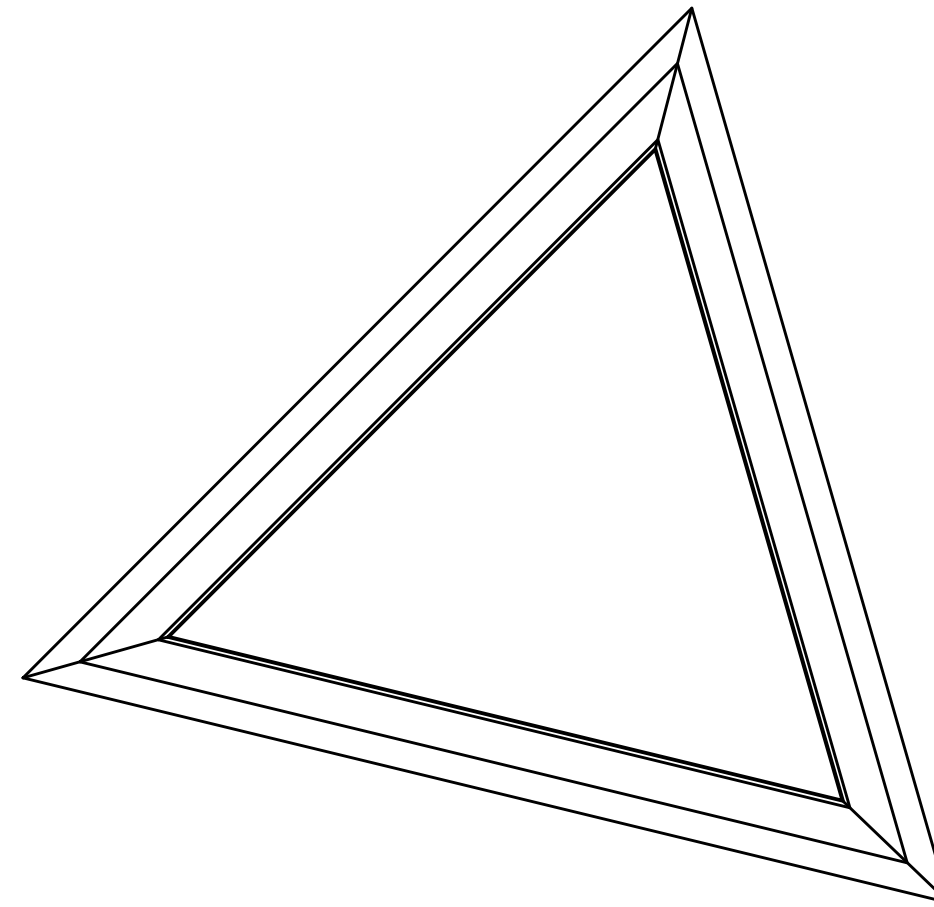
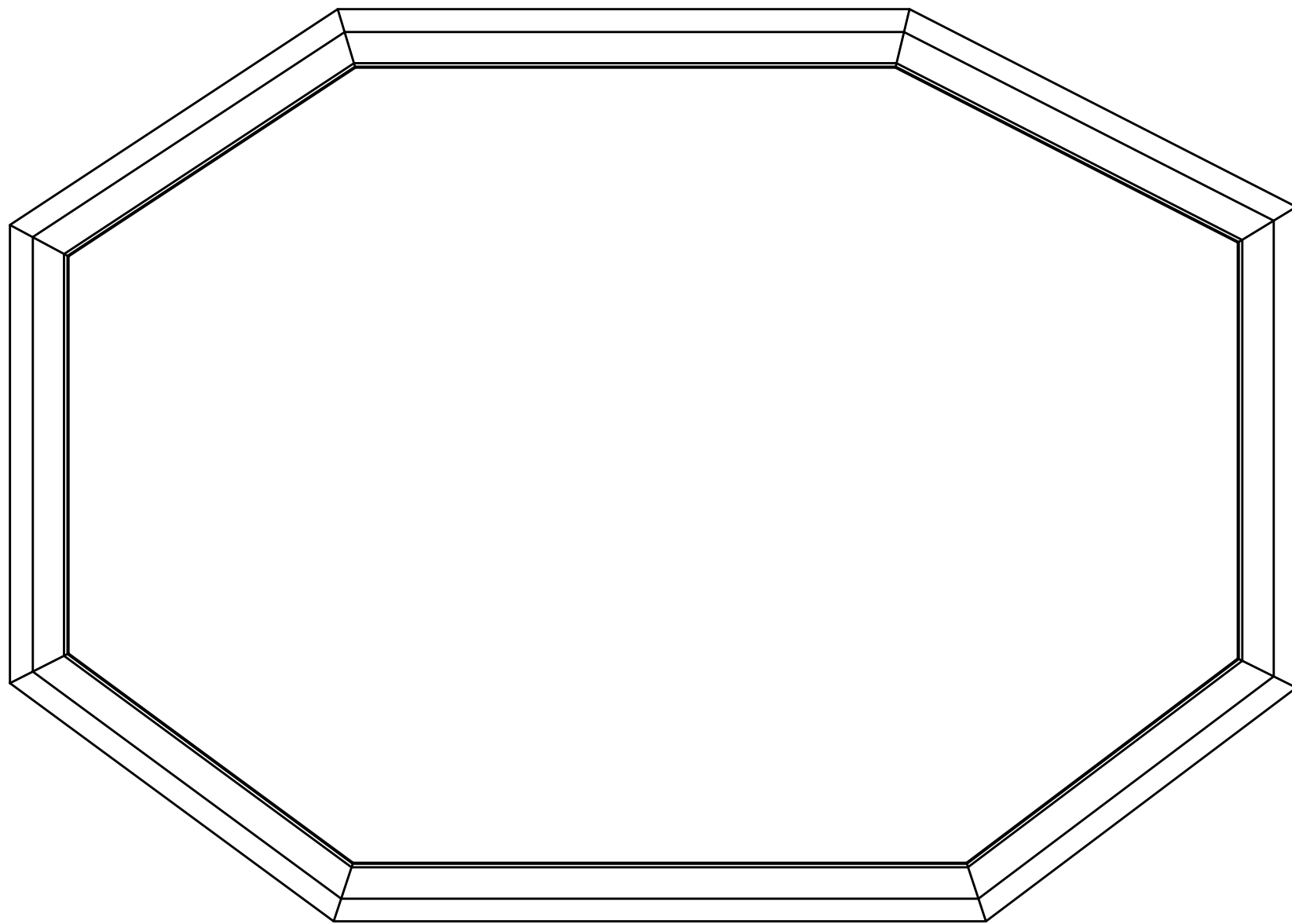
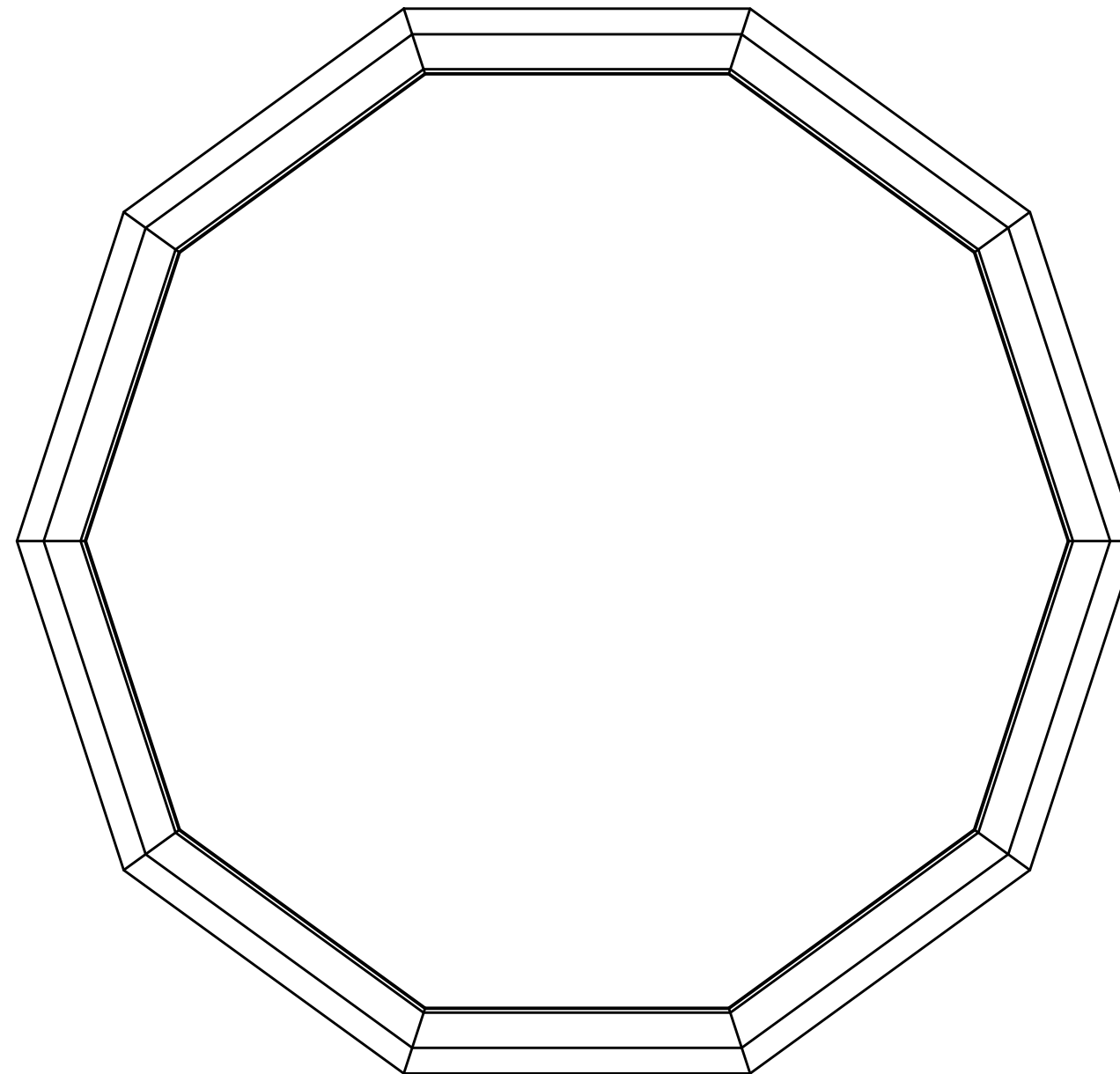
B

A

<<< 420mm

<<< 594mm



REFLECTED CEILING PLAN  
CONFIG 1REFLECTED CEILING PLAN  
CONFIG 2REFLECTED CEILING PLAN  
CONFIG 3REFLECTED CEILING PLAN  
**CONFIG 4**

- THIS DRAWING IS COPYRIGHT AND THE PROPERTY OF THE AUTHOR, AND MUST NOT BE RETAINED, COPIED OR USED WITHOUT THE AUTHORITY OF SMOKE CONTROL SYSTEMS PTY. LTD.
- DO NOT SCALE FROM DRAWING, USE PROVIDED DIMENSIONS ONLY.
- ALL DISCREPANCIES MUST BE BROUGHT TO THE ATTENTION OF AUTHOR.
- SMOKE CONTROL SYSTEMS DO NOT TAKE RESPONSIBILITY OF MEASUREMENTS PROVIDED BY OTHERS.

Rev	CHK	REASON	DATE
A	IR	FOR APPROVAL	26/07/2016

## DISCLAIMER

INFORMATION GIVEN IN [SMOKECONTROL.COM/AU](http://SMOKECONTROL.COM/AU) AND PUBLICATIONS FOR DOWNLOAD ARE GIVEN TO THE BEST OF OUR KNOWLEDGE AND IN GOOD FAITH. SMOKE CONTROL IS NOT RESPONSIBLE IF RECIPIENTS OF TEST REPORTS, ASSESSMENTS OR LITERATURE MISINTERPRET THE CONTENTS AND WRONGLY USE PRODUCTS BASED ON THOSE MISINTERPRETATIONS. NO LIABILITY IS ACCEPTED FOR ERROR OMISSIONS IN THIS WEB SITE OR OUR DOCUMENTS. IN THE INTERESTS OF IMPROVEMENTS AND CONTINUED DEVELOPMENT SMOKE CONTROL RESERVES THE RIGHT TO CHANGE SPECIFICATION WITHOUT NOTICE.

**INFORMATION  
COPY ONLY**



WWW.SMOKECONTROL.COM.AU

<b>NSW HEADOFFICE</b> PHONE: 1300 665 471 26 FERNDILL ST, (ENTER VIA STRAITS AVE) SOUTH GRANVILLE NSW 2142	<b>WESTERN AUSTRALIA:</b> <b>AUSTRALIAN FIRE CONTROL</b> PHONE: 08 9399 6957 UNIT 2, 71-73 BRANT RD KELMSCOTT WA 6997
--	---

**VICTORIA OFFICE**  
PHONE: 0417 657 623  
336 SETTLEMENT RD  
THOMASTOWN VIC 3074

# PROJECT SCS-FHE FYREHALT EVOLUTION PRODUCT TEMPLATE

CLIENT

TITLE	FYREHALT EVOLUTION OTHER CLOSED CONFIGURATIONS
-------	--

SUB SET (CATEGORY)
--------------------

01 - PLANS
DRAWING NUMBER

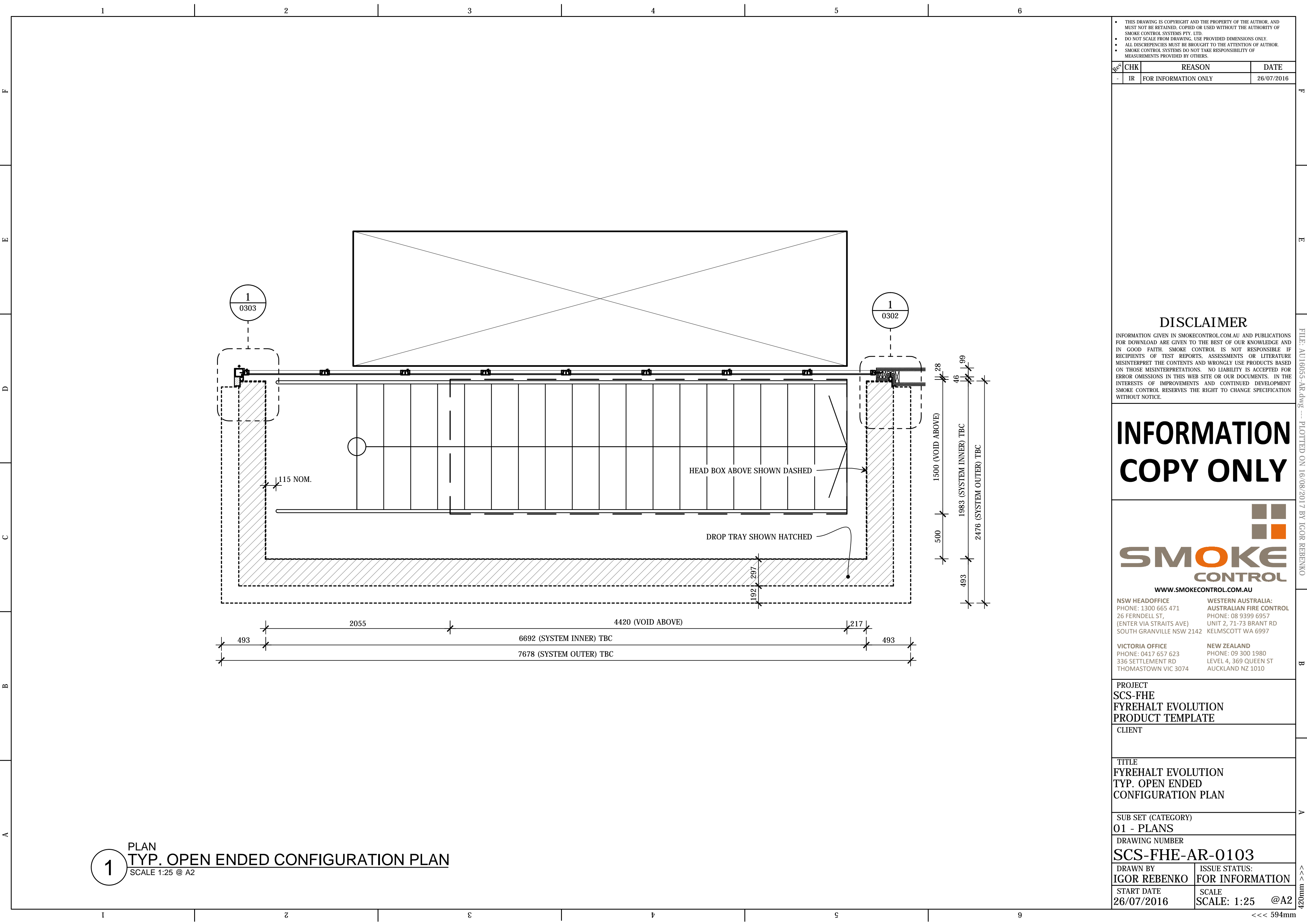
SCS-FHE-0102

DRAWN BY  
IGOR REBENKO

ISSUE STATUS:  
FOR INFORMATION

START DATE	26/07/2016
------------	------------

SCALE NTS	@A2
--------------	-----



THIS DRAWING IS COPYRIGHT AND THE PROPERTY OF THE AUTHOR, AND MUST NOT BE RETAINED, COPIED OR USED WITHOUT THE AUTHORITY OF SMOKE CONTROL SYSTEMS PTY. LTD.  
DO NOT SCALE FROM DRAWING. USE PROVIDED DIMENSIONS ONLY.  
ALL DISCREPANCIES MUST BE BROUGHT TO THE ATTENTION OF AUTHOR.  
SMOKE CONTROL SYSTEMS DO NOT TAKE RESPONSIBILITY OF MEASUREMENTS PROVIDED BY OTHERS.

Rev	CHK	REASON	DATE
-	IR	FOR INFORMATION ONLY	26/07/2016

**DISCLAIMER**  
INFORMATION GIVEN IN SMOKECONTROL.COM.AU AND PUBLICATIONS FOR DOWNLOAD ARE GIVEN TO THE BEST OF OUR KNOWLEDGE AND IN GOOD FAITH. SMOKE CONTROL IS NOT RESPONSIBLE IF RECIPIENTS OF TEST REPORTS, ASSESSMENTS OR LITERATURE MISINTERPRET THE CONTENTS AND WRONGLY USE PRODUCTS BASED ON THOSE MISINTERPRETATIONS. NO LIABILITY IS ACCEPTED FOR ERROR OMISSIONS IN THIS WEB SITE OR OUR DOCUMENTS. IN THE INTERESTS OF IMPROVEMENTS AND CONTINUED DEVELOPMENT SMOKE CONTROL RESERVES THE RIGHT TO CHANGE SPECIFICATION WITHOUT NOTICE.

**INFORMATION  
COPY ONLY**



WWW.SMOKECONTROL.COM.AU  
NSW HEADOFFICE  
PHONE: 1300 665 471  
26 FERNDILL ST,  
(ENTER VIA STRAITS AVE)  
SOUTH GRANVILLE NSW 2142  
WESTERN AUSTRALIA:  
AUSTRALIAN FIRE CONTROL  
PHONE: 08 9399 6957  
UNIT 2, 71-73 BRANT RD  
KELMSCOTT WA 6997

VICTORIA OFFICE  
PHONE: 0417 657 623  
336 SETTLEMENT RD  
THOMASTOWN VIC 3074  
NEW ZEALAND  
PHONE: 09 300 1980  
LEVEL 4, 369 QUEEN ST  
AUCKLAND NZ 1010

PROJECT  
SCS-FHE  
FYREHALT EVOLUTION  
PRODUCT TEMPLATE  
CLIENT

TITLE  
FYREHALT EVOLUTION  
TYP. OPEN ENDED  
CONFIGURATION PLAN

SUB SET (CATEGORY)  
01 - PLANS

DRAWING NUMBER  
SCS-FHE-AR-0103

DRAWN BY  
IGOR REBENKO  
ISSUE STATUS:  
FOR INFORMATION

START DATE  
26/07/2016  
SCALE  
SCALE: 1:25 @A2

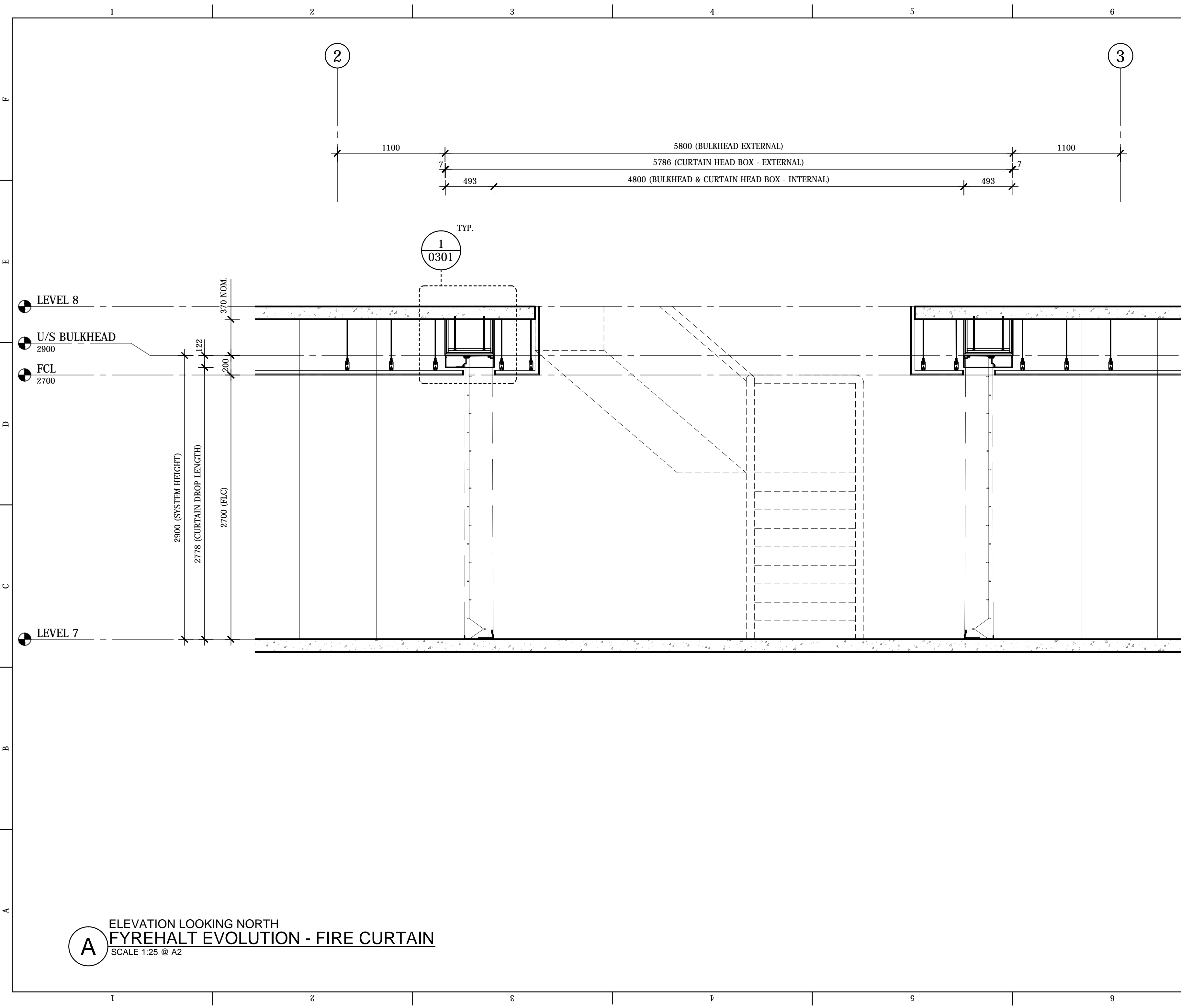
PLAN  
TYP. OPEN ENDED CONFIGURATION PLAN  
SCALE 1:25 @ A2

FILE: AU16055-AR.dwg --- PLOTTED ON 16/08/2017 BY IGOR REBENKO

B

A

<<< 594mm  
420mm



- THIS DRAWING IS COPYRIGHT AND THE PROPERTY OF THE AUTHOR, AND MUST NOT BE RETAINED, COPIED OR USED WITHOUT THE AUTHORITY OF SMOKE CONTROL SYSTEMS PTY. LTD.
- DO NOT SCALE FROM DRAWING. USE PROVIDED DIMENSIONS ONLY.
- ALL DISCREPENCIES MUST BE BROUGHT TO THE ATTENTION OF AUTHOR.
- SMOKE CONTROL SYSTEMS DO NOT TAKE RESPONSIBILITY OF MEASUREMENTS PROVIDED BY OTHERS.

Rev	CHK	REASON	DATE
-	IR	FOR INFORMATION ONLY	26/07/2016

### DISCLAIMER

INFORMATION GIVEN IN SMOKECONTROL.COM.AU AND PUBLICATIONS FOR DOWNLOAD ARE GIVEN TO THE BEST OF OUR KNOWLEDGE AND IN GOOD FAITH. SMOKE CONTROL IS NOT RESPONSIBLE IF RECIPIENTS OF TEST REPORTS, ASSESSMENTS OR LITERATURE MISINTERPRET THE CONTENTS AND WRONGLY USE PRODUCTS BASED ON THOSE MISINTERPRETATIONS. NO LIABILITY IS ACCEPTED FOR ERROR OMISSIONS IN THIS WEB SITE OR OUR DOCUMENTS. IN THE INTERESTS OF IMPROVEMENTS AND CONTINUED DEVELOPMENT SMOKE CONTROL RESERVES THE RIGHT TO CHANGE SPECIFICATION WITHOUT NOTICE.

INFORMATION  
COPY ONLY



NSW HEADOFFICE  
PHONE: 1300 665 471  
26 FERNDILL ST,  
(ENTER VIA STRAITS AVE)  
SOUTH GRANVILLE NSW 2142

WESTERN AUSTRALIA:  
AUSTRALIAN FIRE CONTROL  
PHONE: 08 9399 6957  
UNIT 2, 71-73 BRANT RD  
KELMSCOTT WA 6997

VICTORIA OFFICE  
PHONE: 0417 657 623  
336 SETTLEMENT RD  
THOMASTOWN VIC 3074

NEW ZEALAND  
PHONE: 09 300 1980  
LEVEL 4, 369 QUEEN ST  
AUCKLAND NZ 1010

PROJECT  
SCS-FHE  
FYREHALT EVOLUTION  
PRODUCT TEMPLATE  
CLIENT

TITLE  
FYREHALT EVOLUTION  
ELEVATION SECTION 1

SUB SET (CATEGORY)  
02 - ELEVATIONS

DRAWING NUMBER  
SCS-FHE-0201

DRAWN BY  
IGOR REBENKO

ISSUE STATUS:  
FOR INFORMATION

START DATE  
26/07/2016

SCALE  
---- @A2

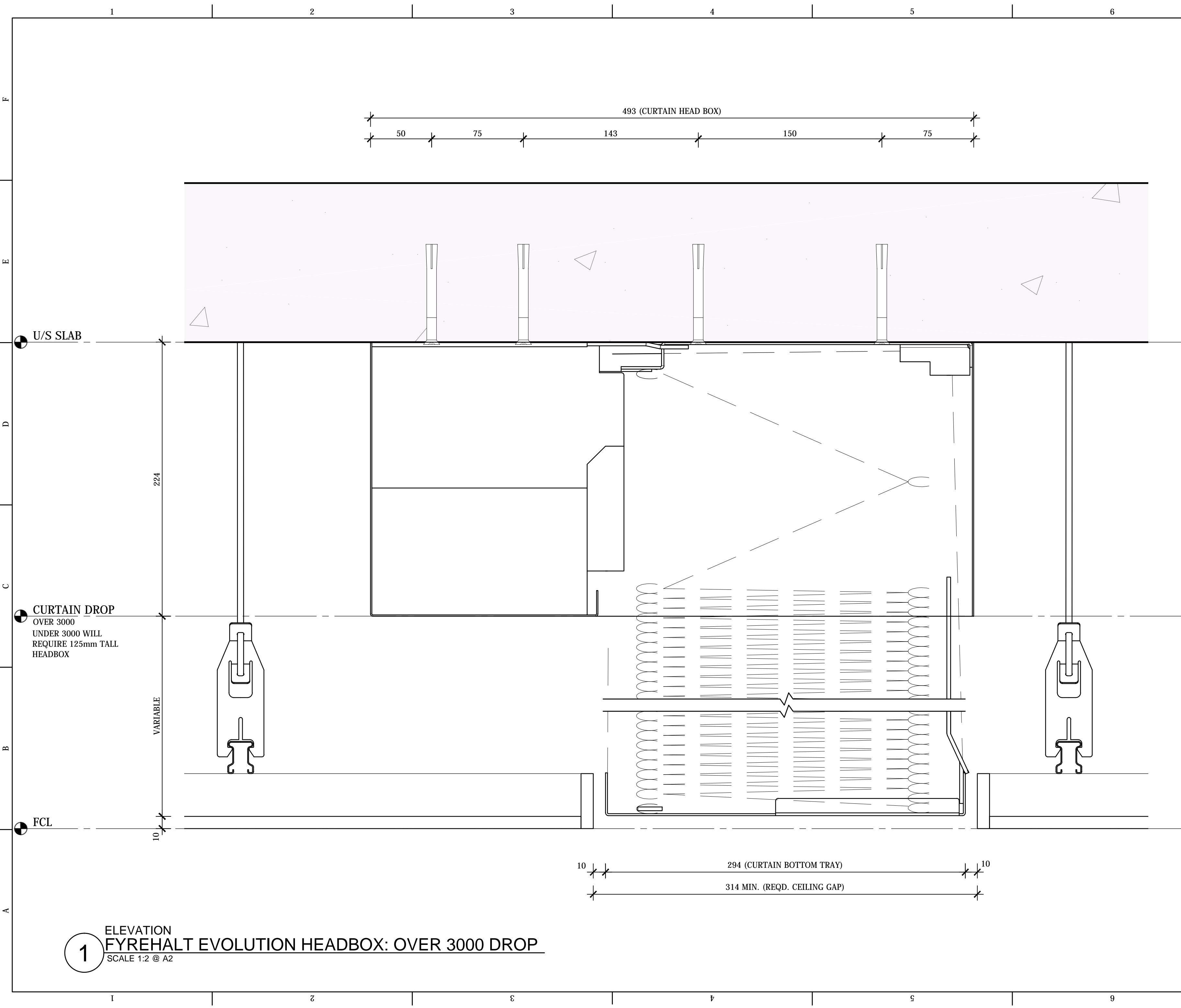
ELEVATION LOOKING NORTH  
FYREHALT EVOLUTION - FIRE CURTAIN  
SCALE 1:25 @ A2











• THIS DRAWING IS COPYRIGHT AND THE PROPERTY OF THE AUTHOR, AND MUST NOT BE RETAINED, COPIED OR USED WITHOUT THE AUTHORITY OF SMOKE CONTROL SYSTEMS PTY. LTD.  
• DO NOT SCALE FROM DRAWING. USE PROVIDED DIMENSIONS ONLY.  
• ALL DISCREPENCIES MUST BE BROUGHT TO THE ATTENTION OF AUTHOR.  
• SMOKE CONTROL SYSTEMS DO NOT TAKE RESPONSIBILITY OF MEASUREMENTS PROVIDED BY OTHERS.

Rev	CHK	REASON	DATE
-	IR	FOR INFORMATION ONLY	26/07/2016

**DISCLAIMER**  
INFORMATION GIVEN IN SMOKECONTROL.COM.AU AND PUBLICATIONS FOR DOWNLOAD ARE GIVEN TO THE BEST OF OUR KNOWLEDGE AND IN GOOD FAITH. SMOKE CONTROL IS NOT RESPONSIBLE IF RECIPIENTS OF TEST REPORTS, ASSESSMENTS OR LITERATURE MISINTERPRET THE CONTENTS AND WRONGLY USE PRODUCTS BASED ON THOSE MISINTERPRETATIONS. NO LIABILITY IS ACCEPTED FOR ERROR OMISSIONS IN THIS WEB SITE OR OUR DOCUMENTS. IN THE INTERESTS OF IMPROVEMENTS AND CONTINUED DEVELOPMENT SMOKE CONTROL RESERVES THE RIGHT TO CHANGE SPECIFICATION WITHOUT NOTICE.

**INFORMATION  
COPY ONLY**



**SMOKE  
CONTROL**

[WWW.SMOKECONTROL.COM.AU](http://WWW.SMOKECONTROL.COM.AU)

**NSW HEADOFFICE**  
PHONE: 1300 665 471  
26 FERNDILL ST,  
(ENTER VIA STRAITS AVE)  
SOUTH GRANVILLE NSW 2142

**WESTERN AUSTRALIA:  
AUSTRALIAN FIRE CONTROL**  
PHONE: 08 9399 6957  
UNIT 2, 71-73 BRANT RD  
KELMSCOTT WA 6997

**VICTORIA OFFICE**  
PHONE: 0417 657 623  
336 SETTLEMENT RD  
THOMASTOWN VIC 3074

**NEW ZEALAND**  
PHONE: 09 300 1980  
LEVEL 4, 369 QUEEN ST  
AUCKLAND NZ 1010

PROJECT  
**SCS-FHE  
FYREHALT EVOLUTION  
PRODUCT TEMPLATE**  
CLIENT

TITLE  
**FYREHALT EVOLUTION  
HEAD BOX DETAIL  
OVER 300 DROP**

SUB SET (CATEGORY)  
**03 - DETAILS**

DRAWING NUMBER  
**SCS-FHE-0302**

DRAWN BY  
**IGOR REBENKO**

ISSUE STATUS:  
**FOR INFORMATION**

START DATE  
**26/07/2016**

SCALE  
**AS SHOWN @A2**

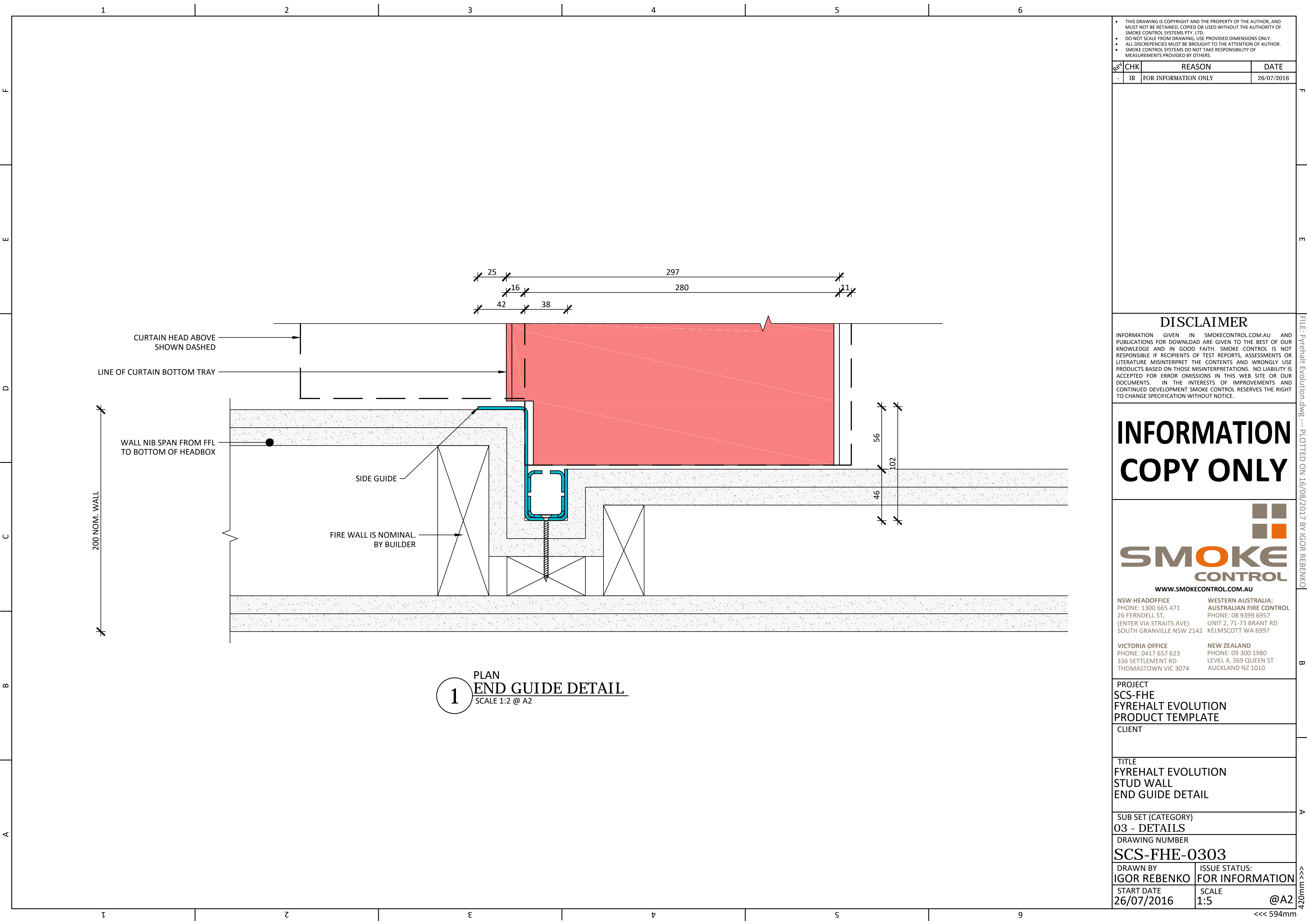
FILE: AU16046.dwg --- PLOTTED ON 16/08/2017 BY IGOR REBENKO

B

A

<<< 420mm

>>> 594mm



• THIS DRAWING IS COPYRIGHT AND THE PROPERTY OF THE AUTHOR, AND MUST NOT BE RETAINED, COPIED OR USED WITHOUT THE AUTHORITY OF SMOKE CONTROL SYSTEMS PTY. LTD.  
• DO NOT SCALE FROM DRAWING, USE PROVIDED DIMENSIONS ONLY.  
• ALL DISCREPENCIES MUST BE BROUGHT TO THE ATTENTION OF AUTHOR.  
• SMOKE CONTROL SYSTEMS DO NOT TAKE RESPONSIBILITY OF MEASUREMENTS PROVIDED BY OTHERS.

Rev	CHK	REASON	DATE
-	IR	FOR INFORMATION ONLY	26/07/2016

**DISCLAIMER**  
INFORMATION GIVEN IN SMOKECONTROL.COM.AU AND PUBLICATIONS FOR DOWNLOAD ARE GIVEN TO THE BEST OF OUR KNOWLEDGE AND IN GOOD FAITH. SMOKE CONTROL IS NOT RESPONSIBLE IF RECIPIENTS OF TEST REPORTS, ASSESSMENTS OR LITERATURE MISINTERPRET THE CONTENTS AND WRONGLY USE PRODUCTS BASED ON THOSE MISINTERPRETATIONS. NO LIABILITY IS ACCEPTED FOR ERROR OMISSIONS IN THIS WEB SITE OR OUR DOCUMENTS. IN THE INTERESTS OF IMPROVEMENTS AND CONTINUED DEVELOPMENT SMOKE CONTROL RESERVES THE RIGHT TO CHANGE SPECIFICATION WITHOUT NOTICE.

**INFORMATION  
COPY ONLY**



**SMOKE  
CONTROL**

WWW.SMOKECONTROL.COM.AU

**NSW HEADOFFICE**  
PHONE: 1300 665 471  
26 FERNDILL ST,  
(ENTER VIA STRAITS AVE)  
SOUTH GRANVILLE NSW 2142

**WESTERN AUSTRALIA:  
AUSTRALIAN FIRE CONTROL**  
PHONE: 08 9399 6957  
UNIT 2, 71-73 BRANT RD  
KELMSCOTT WA 6997

**VICTORIA OFFICE**  
PHONE: 0417 657 623  
336 SETTLEMENT RD  
THOMASTOWN VIC 3074

**NEW ZEALAND**  
PHONE: 09 300 1980  
LEVEL 4, 369 QUEEN ST  
AUCKLAND NZ 1010

PROJECT  
**SCS-FHE  
FYREHALT EVOLUTION  
PRODUCT TEMPLATE**

CLIENT

TITLE  
**FYREHALT EVOLUTION  
STUD WALL  
END GUIDE DETAIL**

SUB SET (CATEGORY)  
**03 - DETAILS**

DRAWING NUMBER  
**SCS-FHE-0303**

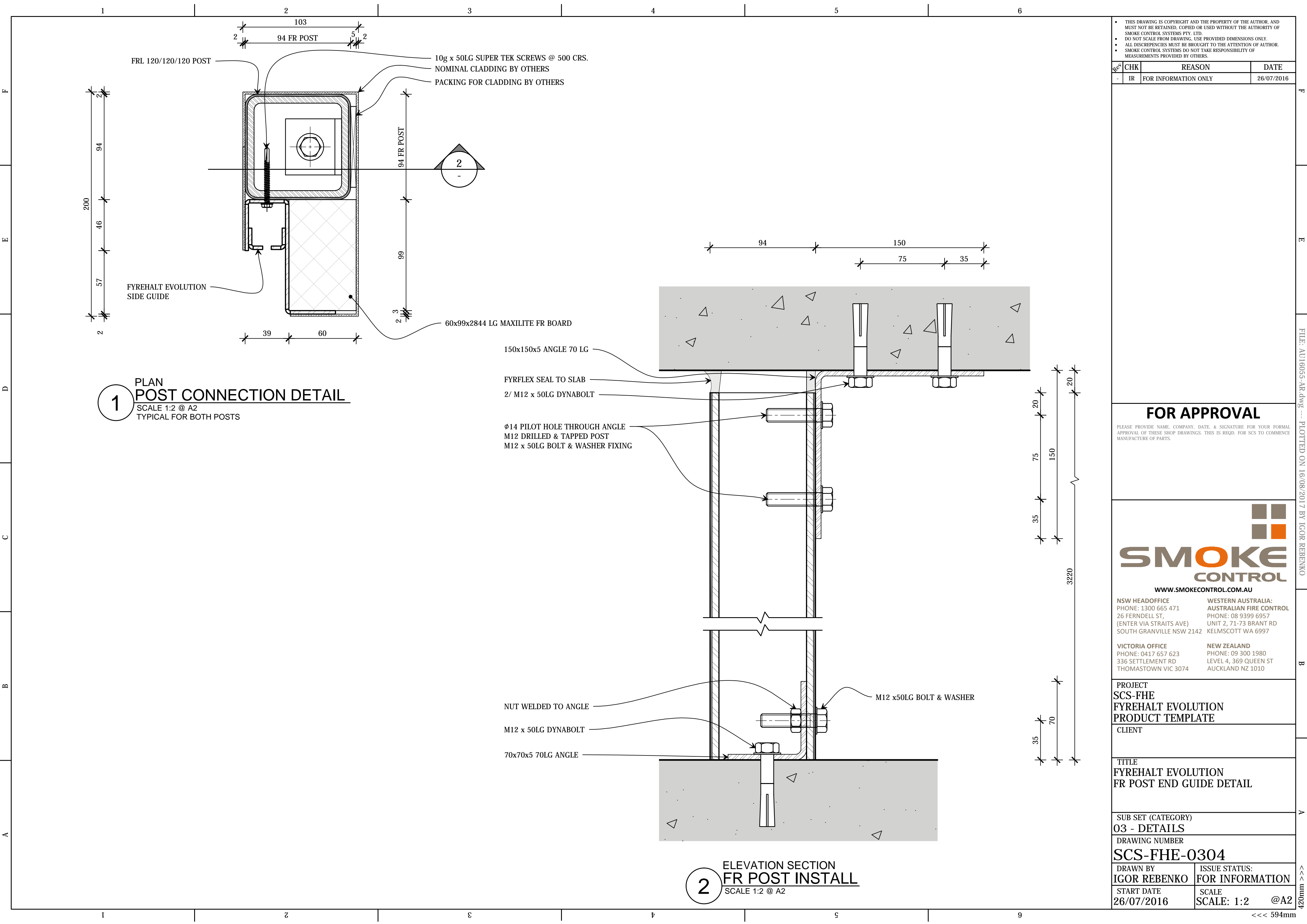
DRAWN BY <b>IGOR REBENKO</b>	ISSUE STATUS: <b>FOR INFORMATION</b>
START DATE <b>26/07/2016</b>	SCALE <b>1:5 @A2</b>

FILE: Fyrehalt Evolution.dwg --- PLOTTED ON 16/08/2017 BY IGOR REBENKO

B

A

<<< 594mm  
420mm



- THIS DRAWING IS COPYRIGHT AND THE PROPERTY OF THE AUTHOR, AND MUST NOT BE RETAINED, COPIED OR USED WITHOUT THE AUTHORITY OF SMOKE CONTROL SYSTEMS PTY. LTD.
- DO NOT SCALE FROM DRAWING. USE PROVIDED DIMENSIONS ONLY.
- ALL DISCREPANCIES MUST BE BROUGHT TO THE ATTENTION OF AUTHOR.
- SMOKE CONTROL SYSTEMS DO NOT TAKE RESPONSIBILITY OF MEASUREMENTS PROVIDED BY OTHERS.

Rev	CHK	REASON	DATE
-	IR	FOR INFORMATION ONLY	26/07/2016

FOR APPROVAL

PLEASE PROVIDE NAME, COMPANY, DATE, & SIGNATURE FOR YOUR FORMAL APPROVAL OF THESE SHOP DRAWINGS. THIS IS REQD. FOR SCS TO COMMENCE MANUFACTURE OF PARTS.



**SMOKE CONTROL**

WWW.SMOKECONTROL.COM.AU

NSW HEADOFFICE  
PHONE: 1300 665 471  
26 FERNDILL ST,  
(ENTER VIA STRAITS AVE)  
SOUTH GRANVILLE NSW 2142

WESTERN AUSTRALIA:  
AUSTRALIAN FIRE CONTROL  
PHONE: 08 9399 6957  
UNIT 2, 71-73 BRANT RD  
KELMSCOTT WA 6997

VICTORIA OFFICE  
PHONE: 0417 657 623  
336 SETTLEMENT RD  
THOMASTOWN VIC 3074

NEW ZEALAND  
PHONE: 09 300 1980  
LEVEL 4, 369 QUEEN ST  
AUCKLAND NZ 1010

PROJECT

SCS-FHE

FYREHALT EVOLUTION

PRODUCT TEMPLATE

CLIENT

TITLE

FYREHALT EVOLUTION

FR POST END GUIDE DETAIL

SUB SET (CATEGORY)

03 - DETAILS

DRAWING NUMBER

SCS-FHE-0304

DRAWN BY

IGOR REBENKO

ISSUE STATUS:

FOR INFORMATION

START DATE

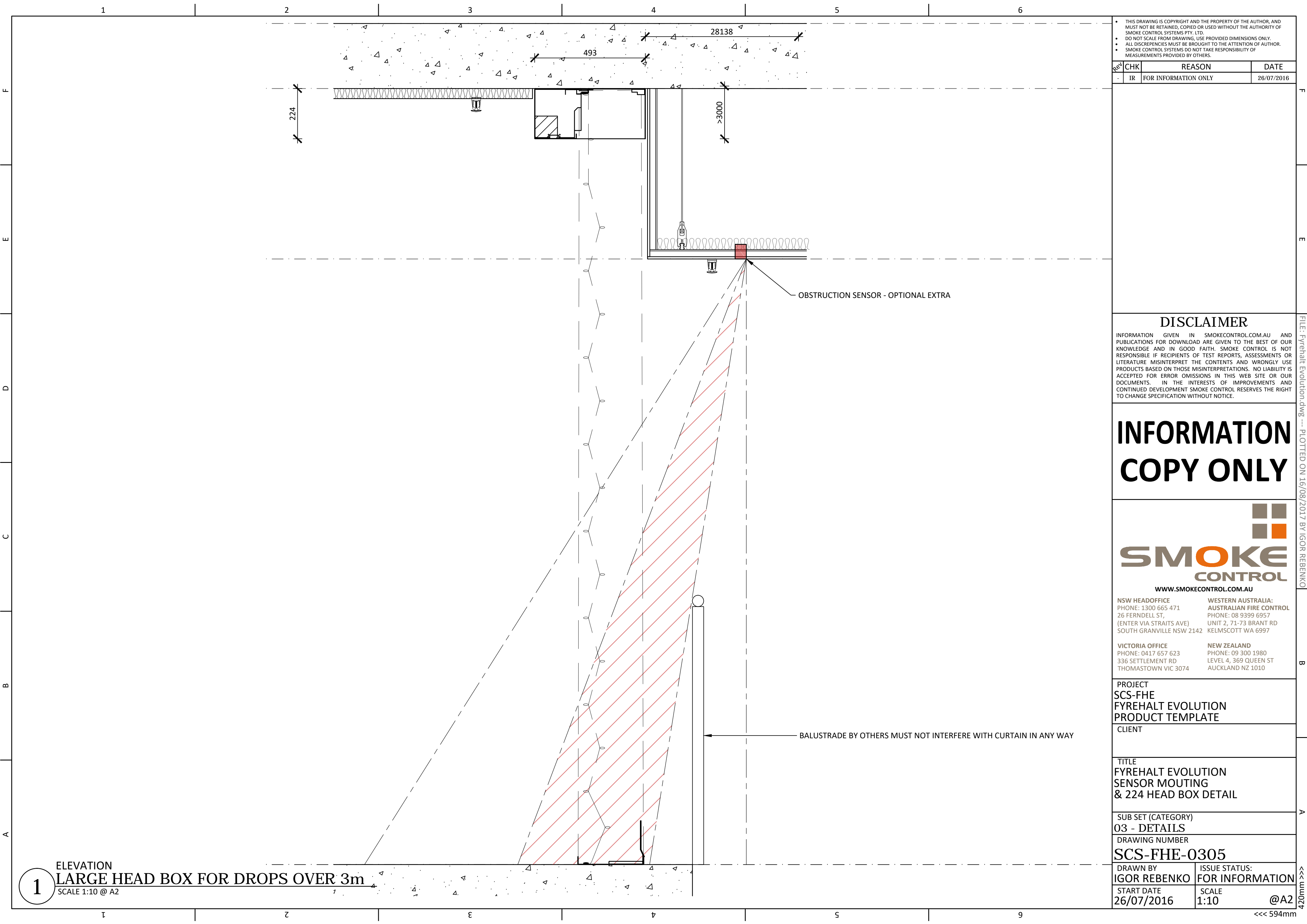
26/07/2016

SCALE

SCALE: 1:2 @A2

<<< 420mm

<<< 594mm



THIS DRAWING IS COPYRIGHT AND THE PROPERTY OF THE AUTHOR, AND MUST NOT BE RETAINED, COPIED OR USED WITHOUT THE AUTHORITY OF SMOKE CONTROL SYSTEMS PTY. LTD.  
DO NOT SCALE FROM DRAWING, USE PROVIDED DIMENSIONS ONLY.  
ALL DISCREPENCIES MUST BE BROUGHT TO THE ATTENTION OF AUTHOR.  
SMOKE CONTROL SYSTEMS DO NOT TAKE RESPONSIBILITY OF MEASUREMENTS PROVIDED BY OTHERS.

Rev	CHK	REASON	DATE
-	IR	FOR INFORMATION ONLY	26/07/2016

DISCLAIMER

INFORMATION GIVEN IN SMOKECONTROL.COM.AU AND PUBLICATIONS FOR DOWNLOAD ARE GIVEN TO THE BEST OF OUR KNOWLEDGE AND IN GOOD FAITH. SMOKE CONTROL IS NOT RESPONSIBLE IF RECIPIENTS OF TEST REPORTS, ASSESSMENTS OR LITERATURE MISINTERPRET THE CONTENTS AND WRONGLY USE PRODUCTS BASED ON THOSE MISINTERPRETATIONS. NO LIABILITY IS ACCEPTED FOR ERROR OMISSIONS IN THIS WEB SITE OR OUR DOCUMENTS. IN THE INTERESTS OF IMPROVEMENTS AND CONTINUED DEVELOPMENT SMOKE CONTROL RESERVES THE RIGHT TO CHANGE SPECIFICATION WITHOUT NOTICE.

INFORMATION  
COPY ONLY



NSW HEADOFFICE  
PHONE: 1300 665 471  
26 FERNDILL ST,  
(ENTER VIA STRAITS AVE)  
SOUTH GRANVILLE NSW 2142

WESTERN AUSTRALIA:  
AUSTRALIAN FIRE CONTROL  
PHONE: 08 9399 6957  
UNIT 2, 71-73 BRANT RD  
KELMSCOTT WA 6997

VICTORIA OFFICE  
PHONE: 0417 657 623  
336 SETTLEMENT RD  
THOMASTOWN VIC 3074

NEW ZEALAND  
PHONE: 09 300 1980  
LEVEL 4, 369 QUEEN ST  
AUCKLAND NZ 1010

PROJECT  
SCS-FHE  
FYREHALT EVOLUTION  
PRODUCT TEMPLATE

CLIENT

TITLE  
FYREHALT EVOLUTION  
SENSOR MOUTING  
& 224 HEAD BOX DETAIL

SUB SET (CATEGORY)  
03 - DETAILS

DRAWING NUMBER  
SCS-FHE-0305

DRAWN BY  
IGOR REBENKO

ISSUE STATUS:  
FOR INFORMATION

START DATE  
26/07/2016

SCALE  
1:10 @A2

1

ELEVATION  
LARGE HEAD BOX FOR DROPS OVER 3m  
SCALE 1:10 @ A2

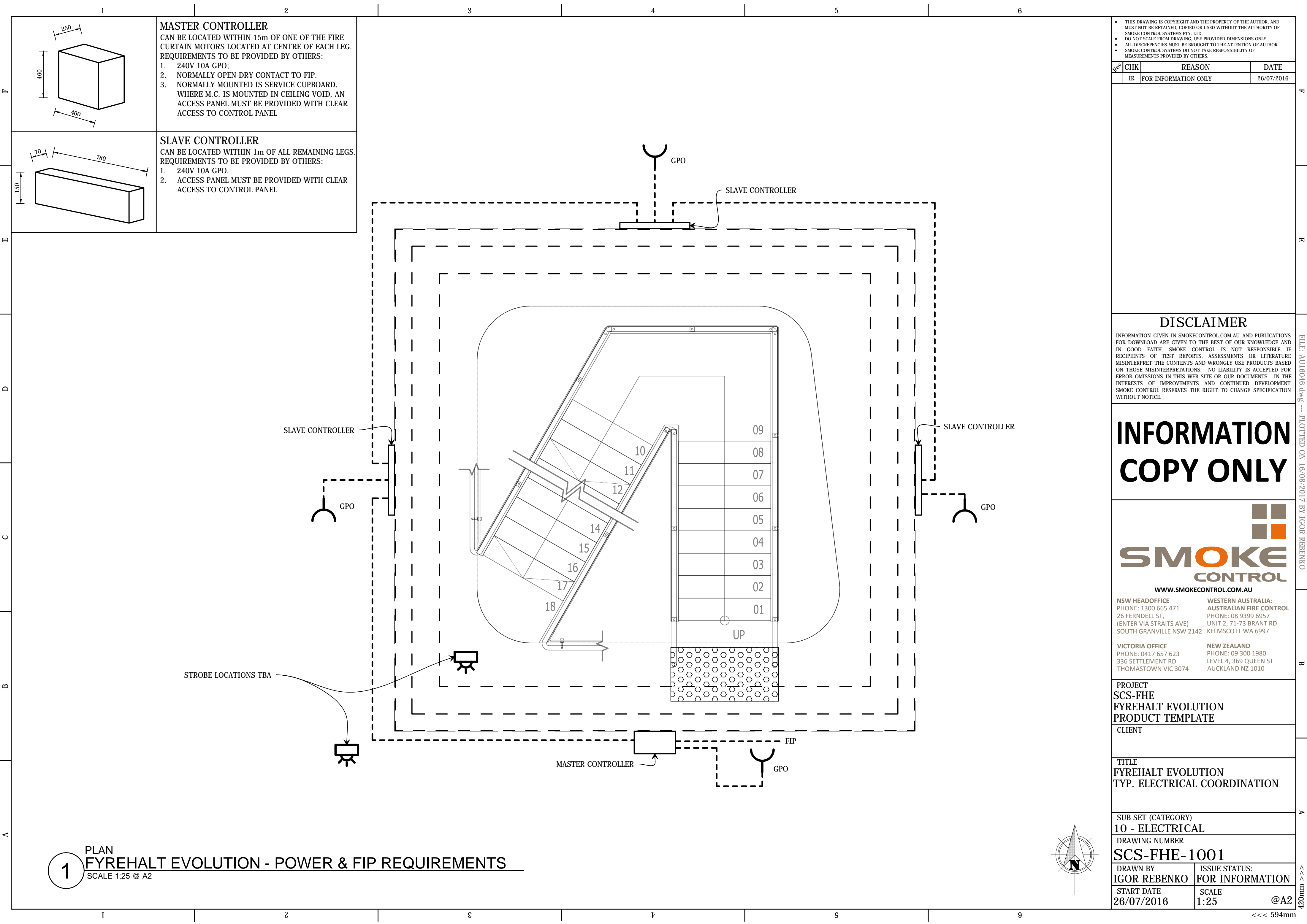
FILE: Fyrehalt Evolution.dwg --- PLOTTED ON 16/08/2017 BY IGOR REBENKO

B

A

<<< 594mm





1

2

**MASTER CONTROLLER**  
CAN BE LOCATED WITHIN 15m OF ONE OF THE FIRE CURTAIN MOTORS LOCATED AT CENTRE OF EACH LEG.  
REQUIREMENTS TO BE PROVIDED BY OTHERS:  
1. 240V 10A GPO;  
2. NORMALLY OPEN DRY CONTACT TO FIP.  
3. NORMALLY MOUNTED IS SERVICE CUPBOARD. WHERE M.C. IS MOUNTED IN CEILING VOID, AN ACCESS PANEL MUST BE PROVIDED WITH CLEAR ACCESS TO CONTROL PANEL

**SLAVE CONTROLLER**  
CAN BE LOCATED WITHIN 1m OF ALL REMAINING LEGS.  
REQUIREMENTS TO BE PROVIDED BY OTHERS:  
1. 240V 10A GPO.  
2. ACCESS PANEL MUST BE PROVIDED WITH CLEAR ACCESS TO CONTROL PANEL

THIS DRAWING IS COPYRIGHT AND THE PROPERTY OF THE AUTHOR, AND MUST NOT BE RETAINED, COPIED OR USED WITHOUT THE AUTHORITY OF SMOKE CONTROL SYSTEMS PTY. LTD.

DO NOT SCALE FROM DRAWING. USE PROVIDED DIMENSIONS ONLY.

ALL DISCREPANCIES MUST BE BROUGHT TO THE ATTENTION OF AUTHOR.

SMOKE CONTROL SYSTEMS DO NOT TAKE RESPONSIBILITY OF MEASUREMENTS PROVIDED BY OTHERS.

Rev

CHK

REASON

DATE

-

IR

FOR INFORMATION ONLY

26/07/2016

**DISCLAIMER**  
INFORMATION GIVEN IN SMOKECONTROL.COM.AU AND PUBLICATIONS FOR DOWNLOAD ARE GIVEN TO THE BEST OF OUR KNOWLEDGE AND IN GOOD FAITH. SMOKE CONTROL IS NOT RESPONSIBLE IF RECIPIENTS OF TEST REPORTS, ASSESSMENTS OR LITERATURE MISINTERPRET THE CONTENTS AND WRONGLY USE PRODUCTS BASED ON THOSE MISINTERPRETATIONS. NO LIABILITY IS ACCEPTED FOR ERROR OMISSIONS IN THIS WEB SITE OR OUR DOCUMENTS. IN THE INTERESTS OF IMPROVEMENTS AND CONTINUED DEVELOPMENT SMOKE CONTROL RESERVES THE RIGHT TO CHANGE SPECIFICATION WITHOUT NOTICE.

**INFORMATION COPY ONLY**

WWW.SMOKECONTROL.COM.AU

NSW HEADOFFICE  
PHONE: 1300 665 471  
26 FERNDILL ST,  
(ENTER VIA STRAITS AVE)  
SOUTH GRANVILLE NSW 2142

WESTERN AUSTRALIA:  
AUSTRALIAN FIRE CONTROL  
PHONE: 08 9399 6957  
UNIT 2, 71-73 BRANT RD  
KELMSCOTT WA 6997

VICTORIA OFFICE  
PHONE: 0417 657 623  
336 SETTLEMENT RD  
THOMASTOWN VIC 3074

NEW ZEALAND  
PHONE: 09 300 1980  
LEVEL 4, 369 QUEEN ST  
AUCKLAND NZ 1010

PROJECT  
SCS-FHE  
FYREHALT EVOLUTION  
PRODUCT TEMPLATE  
CLIENT

TITLE  
FYREHALT EVOLUTION  
TYP. ELECTRICAL COORDINATION

SUB SET (CATEGORY)  
10 - ELECTRICAL

DRAWING NUMBER  
SCS-FHE-1001

DRAWN BY  
IGOR REBENKO

ISSUE STATUS:  
FOR INFORMATION

START DATE  
26/07/2016

SCALE  
1:25 @A2

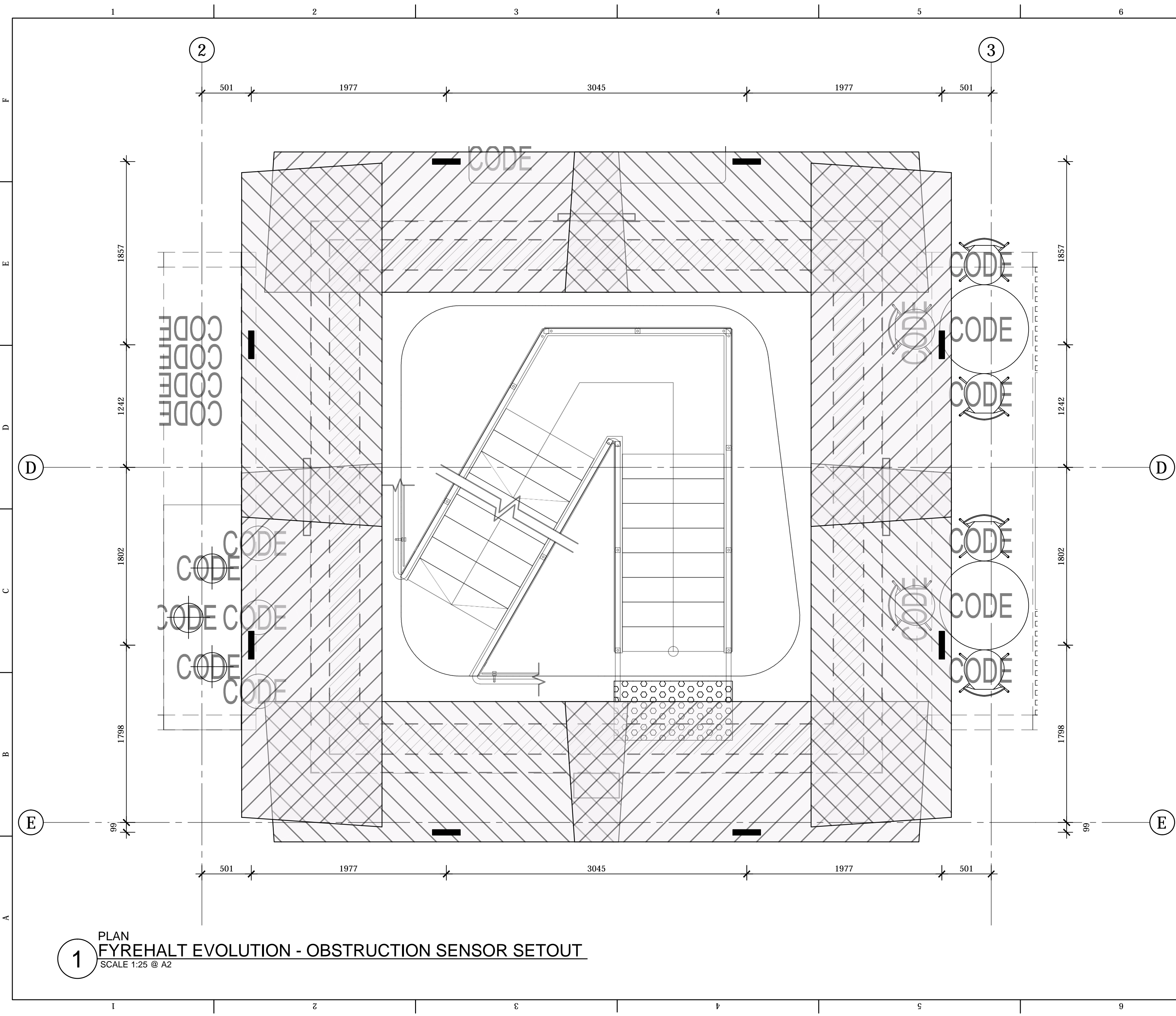
1

PLAN  
FYREHALT EVOLUTION - POWER & FIP REQUIREMENTS  
SCALE 1:25 @ A2

<<< 420mm

>>> 594mm





1 PLAN  
FYREHALT EVOLUTION - OBSTRUCTION SENSOR SETOUT  
SCALE 1:25 @ A2

THIS DRAWING IS COPYRIGHT AND THE PROPERTY OF THE AUTHOR, AND MUST NOT BE RETAINED, COPIED OR USED WITHOUT THE AUTHORITY OF SMOKE CONTROL SYSTEMS PTY. LTD.  
DO NOT SCALE FROM DRAWING. USE PROVIDED DIMENSIONS ONLY.  
ALL DISCREPANCIES MUST BE BROUGHT TO THE ATTENTION OF AUTHOR.  
SMOKE CONTROL SYSTEMS DO NOT TAKE RESPONSIBILITY OF MEASUREMENTS PROVIDED BY OTHERS.

Rev	CHK	REASON	DATE
-	IR	FOR INFORMATION ONLY	26/07/2016

**DISCLAIMER**  
INFORMATION GIVEN IN SMOKECONTROL.COM.AU AND PUBLICATIONS FOR DOWNLOAD ARE GIVEN TO THE BEST OF OUR KNOWLEDGE AND IN GOOD FAITH. SMOKE CONTROL IS NOT RESPONSIBLE IF RECIPIENTS OF TEST REPORTS, ASSESSMENTS OR LITERATURE MISINTERPRET THE CONTENTS AND WRONGLY USE PRODUCTS BASED ON THOSE MISINTERPRETATIONS. NO LIABILITY IS ACCEPTED FOR ERROR OMISSIONS IN THIS WEB SITE OR OUR DOCUMENTS. IN THE INTERESTS OF IMPROVEMENTS AND CONTINUED DEVELOPMENT SMOKE CONTROL RESERVES THE RIGHT TO CHANGE SPECIFICATION WITHOUT NOTICE.

**INFORMATION  
COPY ONLY**



WWW.SMOKECONTROL.COM.AU  
NSW HEADOFFICE  
PHONE: 1300 665 471  
26 FERNDILL ST,  
(ENTER VIA STRAITS AVE)  
SOUTH GRANVILLE NSW 2142  
WESTERN AUSTRALIA:  
AUSTRALIAN FIRE CONTROL  
PHONE: 08 9399 6957  
UNIT 2, 71-73 BRANT RD  
KELMSCOTT WA 6997

VICTORIA OFFICE  
PHONE: 0417 657 623  
336 SETTLEMENT RD  
THOMASTOWN VIC 3074  
NEW ZEALAND  
PHONE: 09 300 1980  
LEVEL 4, 369 QUEEN ST  
AUCKLAND NZ 1010

PROJECT  
SCS-FHE  
FYREHALT EVOLUTION  
PRODUCT TEMPLATE  
CLIENT

TITLE  
FYREHALT EVOLUTION  
TYP. OBSTRUCTION SENSOR SETOUT

SUB SET (CATEGORY)  
10 - ELECTRICAL

DRAWING NUMBER  
SCS-FHE-1002

DRAWN BY  
IGOR REBENKO  
ISSUE STATUS:  
FOR INFORMATION

START DATE  
26/07/2016  
SCALE  
1:25 @A2

FILE: AU16046.dwg --- PLOTTED ON 16/08/2017 BY IGOR REBENKO

B

A

<<< 420mm

<<< 594mm