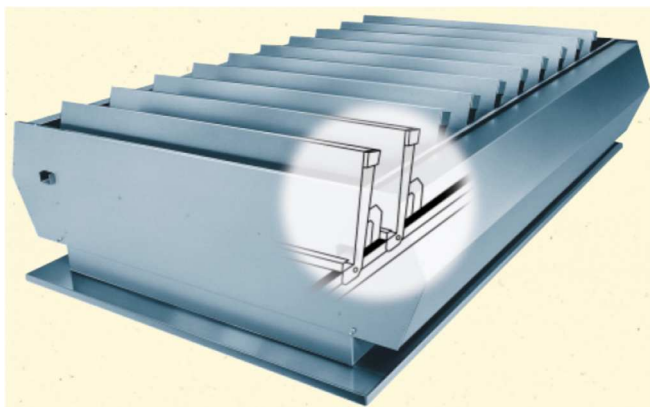


EURA-R

SMOKE AND HEAT RELEASE VENTS



**All weather
natural ventilation**



The Eura-R is a natural smoke/heat ventilator that can extract large volumes of air in all weather conditions. Thanks to its side louvers, the Eura-R is also suitable for buildings that require adequate natural ventilation even when it snows or rains. In the event that weatherproof extraction of larger volumes of air is necessary, extended side louvers can be fitted.

The construction has integral rain gutters for controlled water discharge. The gutters are also designed to drain any dirt.

Operation.

- **P** Single-acting compressed air operation
- **P2** Double-acting compressed air operation
- **M** Motor operation
- **K** Cable operation

Suffix: **B** Fire function
FS Failsafe

Application

Its stylish design has seen the Eura-R used for a wide range of applications including industrial buildings, offices, shopping centres and atria.

Material

Hardened, sea water and corrosion resistant Aluminium (AlMg3) complete with corrosion resistant bearings. Longitudinal sealing is achieved with weatherproof sealing tape and energy strips and is fitted in such a manner as to guarantee it to be frost proof and have a high level of air tightness.

Features

- Economical all weather solution
- Corrosion resistant AlMg3
- Glazed or translucent blade options available
- Powder coated finish available
- High ventilation capacity

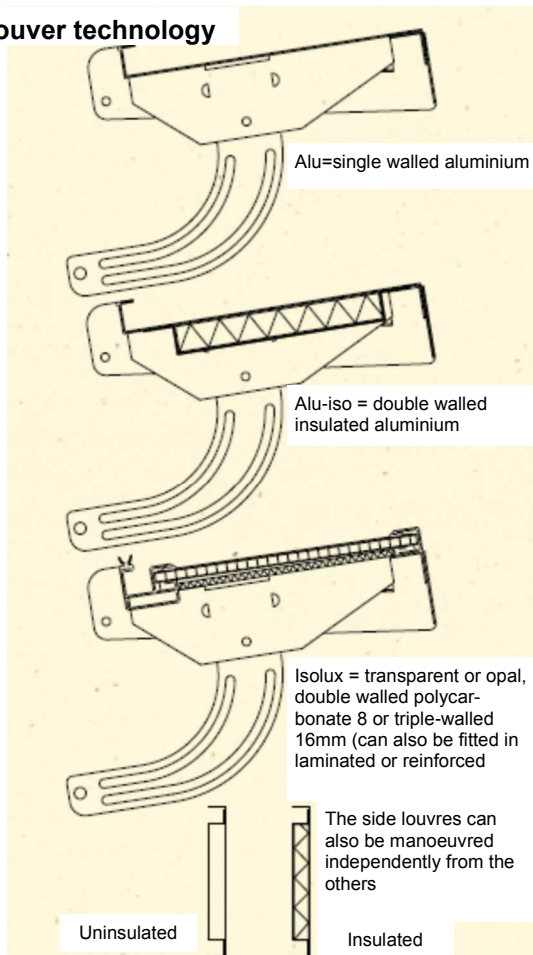
EURA-R

EURA-R

SMOKE AND HEAT RELEASE VENTS

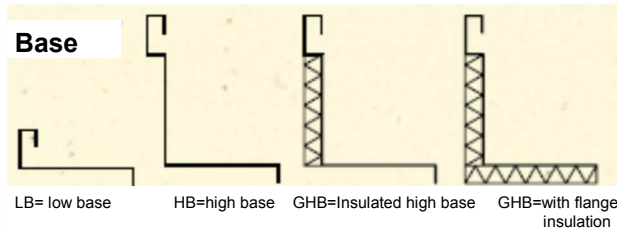


Louver technology

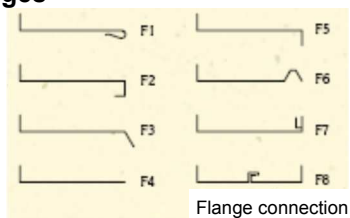


Type	Upper louvers		Side louvers	Weight (kg)	Minimum clear width (mm)	
	Geom. surface (m ²)	Aerod. surface (m ²)	Aerod. surface (m ²)		LB/GHB A x B	HB C x D
60 - 4	0.63	0.42	0.28	40	600 x 940	640 x 980
60 - 5	0.77	0.52	0.35	44	600 x 1160	640 x 1200
60 - 6	0.91	0.61	0.42	49	600 x 1380	640 x 1420
60 - 7	1.05	0.70	0.50	53	600 x 1600	640 x 1640
60 - 8	1.19	0.88	0.57	58	600 x 1820	640 x 1860
60 - 9	1.33	0.89	0.63	62	600 x 2040	640 x 2080
60 - 10	1.47	0.98	0.71	67	600 x 2260	640 x 2300
60 - 11	1.61	1.08	0.79	71	600 x 2480	640 x 2520
60 - 12	1.75	1.17	0.86	76	600 x 2700	640 x 2740
60 - 13	1.89	1.27	0.93	80	600 x 2920	640 x 2960
120 - 4	1.22	0.82	0.28	57	1200 x 940	1240 x 980
120 - 5	1.49	1.00	0.35	64	1200 x 1160	1240 x 1200
120 - 6	1.76	1.18	0.42	70	1200 x 1380	1240 x 1420
120 - 7	2.03	1.36	0.50	77	1200 x 1600	1240 x 1640
120 - 8	2.31	1.55	0.57	83	1200 x 1820	1240 x 1860
120 - 9	2.58	1.73	0.63	90	1200 x 2040	1240 x 2080
120 - 10	2.85	1.91	0.71	96	1200 x 2260	1240 x 2300
1200 - 11	3.12	2.09	0.79	103	1200 x 2480	1240 x 2520
120 - 12	3.40	2.28	0.86	109	1200 x 2700	1240 x 2740
120 - 13	3.67	2.46	0.93	116	1200 x 2920	1240 x 2960
180 - 4	1.80	1.21	0.28	75	1800 x 940	1840 x 980
180 - 5	2.21	1.48	0.35	84	1800 x 1160	1840 x 1200
180 - 6	2.61	1.75	0.42	93	1800 x 1380	1840 x 1420
180 - 7	3.02	2.02	0.50	102	1800 x 1600	1840 x 1640
180 - 8	3.42	2.29	0.57	111	1800 x 1820	1840 x 1860
180 - 9	3.83	2.57	0.63	120	1800 x 2040	1840 x 2080
180 - 10	4.23	2.83	0.71	129	1800 x 2260	1840 x 2300
180 - 11	4.64	3.11	0.79	138	1800 x 2480	1840 x 2520
180 - 12	5.04	3.38	0.86	147	1800 x 2700	1840 x 2740
180 - 13	5.45	3.65	0.93	156	1800 x 2920	1840 x 2960

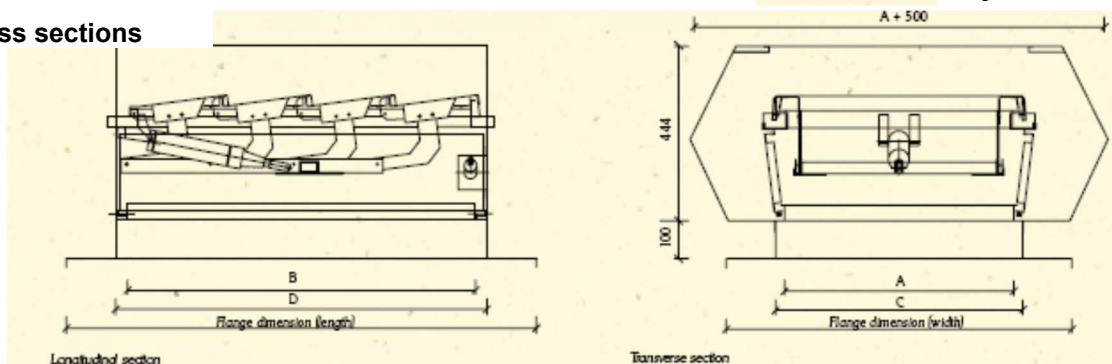
Base



Flanges



Cross sections



EURA-R